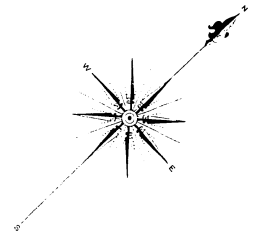
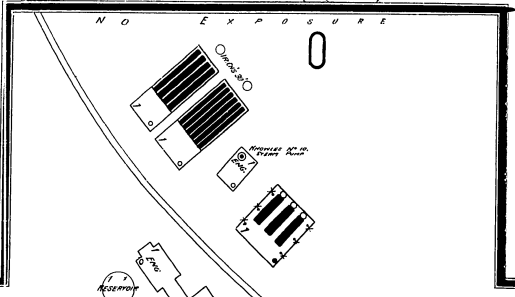
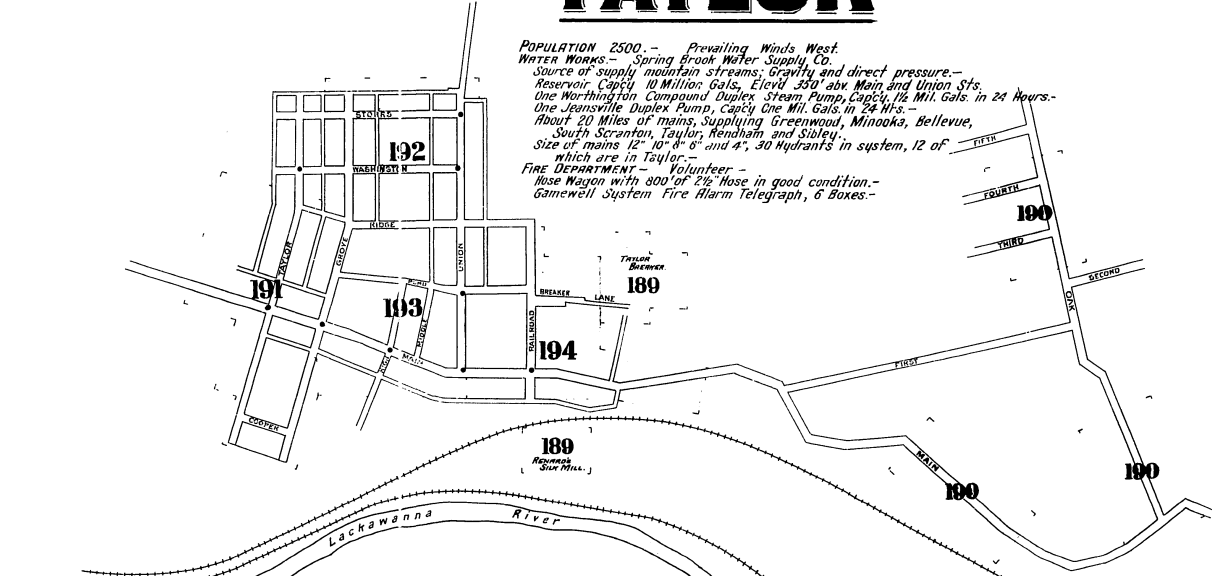


TAYLOR

POPULATION 2500. - Prevailing Winds West.
 WATER WORKS - Spring Brook Water Supply Co.
 Source of supply mountain streams; Gravity and direct pressure -
 Reservoir Capacity 10 Million Gals. Elevation 330' above Main and Union Sts.
 One Worthington Compound Duplex Steam Pump, Capacity 1/2 Mil. Gals. in 24 Hours -
 One Jewettville Duplex Pump, Capacity One Mil. Gals. in 24 Hrs. -
 About 20 Miles of mains, supplying Greenwood, Minooka, Bellevue,
 South Scranton, Taylor, Renham and Sibley.
 Size of mains 12" 10" 8" 6" and 4", 30 Hydrants in system, 12 of
 which are in Taylor -
 FIRE DEPARTMENT - Volunteer -
 Hose Wagon with 800' of 2 1/2" Hose in good condition -
 Gamewell System Fire Alarm Telegraph, 6 Boxes -



DELANARE LACKAWANNA AND WESTERN R. R. CO'S.
 TAYLOR BREAKER -

