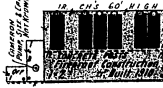


STORRS COLLIERY NO. 3-D. L. & W. R. R. CO.
WARDS-I-3



12 CH'S CO. HIGH
REINFORCED WALLS
REINFORCED CONCR.
FLOOR & ROOF
CONCRETE
CONCRETE

NO WATCHMAN - MEN ON DUTY DAY & NIGHT - POWER L. I. CAT.
STEAM - FUEL, COAL - LIGHTS, ELECTRIC - ONE DBL. HYD. & 200 TON
HOSE -

Fixed Co. 210 BUILT 1910
10 WALLS - CONCR. W.

59
WD 3

HOISTING ENG. HO.
ONE 2 1/2 GAL. ESTING.
ESTING.

SAFETY SWITCH OPEN

5' W. PIPE FROM ONE MIN.

D. H. & 200' 2 1/2" HOSE

5' W. PIPE

5' W. PIPE

5' W. PIPE

5' W. PIPE

5' W. PIPE

5' W. PIPE

5' W. PIPE

5' W. PIPE

5' W. PIPE

5' W. PIPE

5' W. PIPE

5' W. PIPE

5' W. PIPE

5' W. PIPE

5' W. PIPE

5' W. PIPE

5' W. PIPE

5' W. PIPE

5' W. PIPE

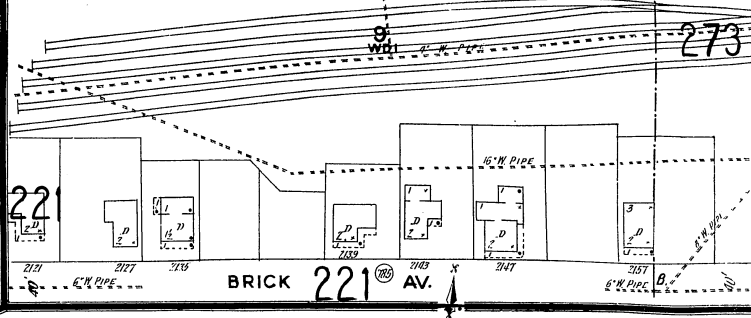
5' W. PIPE

5' W. PIPE

5' W. PIPE

240

LEGITT'S CREEK ANTHRACITE CO.



BRICK 221 AV.

221

221

221

221

221

221

221

221

221

221

221

221

221

221

221

221

221

221

221

221

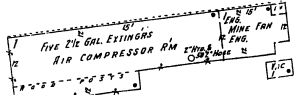
221

221

221

LEGITT'S CREEK ANTHRACITE CO. - LEGITT'S CREEK COLLIERY -

129
WD 1



FIVE 2 1/2 GAL. ESTING.
AIR COMPRESSOR Rm
MINE FAN

5' W. PIPE

5' W. PIPE

5' W. PIPE

5' W. PIPE

5' W. PIPE

5' W. PIPE

5' W. PIPE

5' W. PIPE

5' W. PIPE

5' W. PIPE

5' W. PIPE



HOISTING
ENGIN. HO.
MINE FAN

5' W. PIPE

5' W. PIPE

5' W. PIPE

5' W. PIPE

5' W. PIPE

5' W. PIPE

5' W. PIPE

5' W. PIPE

5' W. PIPE

5' W. PIPE

5' W. PIPE



HOISTING
ENGIN. HO.
MINE FAN

5' W. PIPE

5' W. PIPE

5' W. PIPE

5' W. PIPE

5' W. PIPE

5' W. PIPE

5' W. PIPE

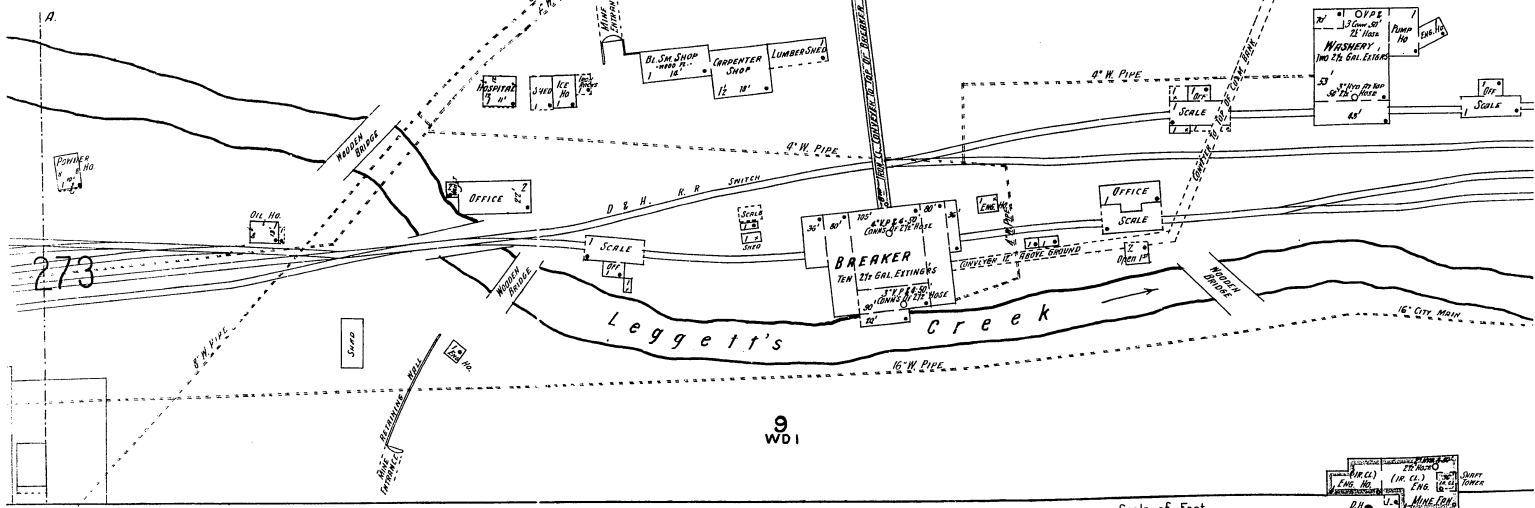
5' W. PIPE

5' W. PIPE

5' W. PIPE

5' W. PIPE

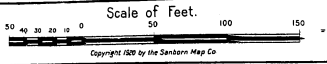
TWO WATCHMEN - 1 HAVING CLOCK, & STARTING EACH
ROUND HOUSERS - POWER & HOIST - STEAM - FUEL, COAL -
LIGHTS, ELECTRIC - TWO OUTSIDE HYDRANTS, AND 7 HOSE
CONNS ON FIRE PUMP WITH 2 1/2" HOSE - ONE HOSE
CONNS WITH 2 1/2" HOSE - IS INSIDE HOUSERS & HOIST -
PIPES & 400' 2" AND 650' 2 1/2" HOSE - WATER JUMP FROM
CITY 2 1/2" HOSE UNDERG. P. PUMP 14.75' x 2'
CAPAC. 500 GAL. PER MIN. DRAWING FROM 30,000 GAL. TANK
AS SHOWN -



BRICK AV.

221

223



Scale of Feet.

Copyright 1920 by the Sanson Map Co.

DEVON