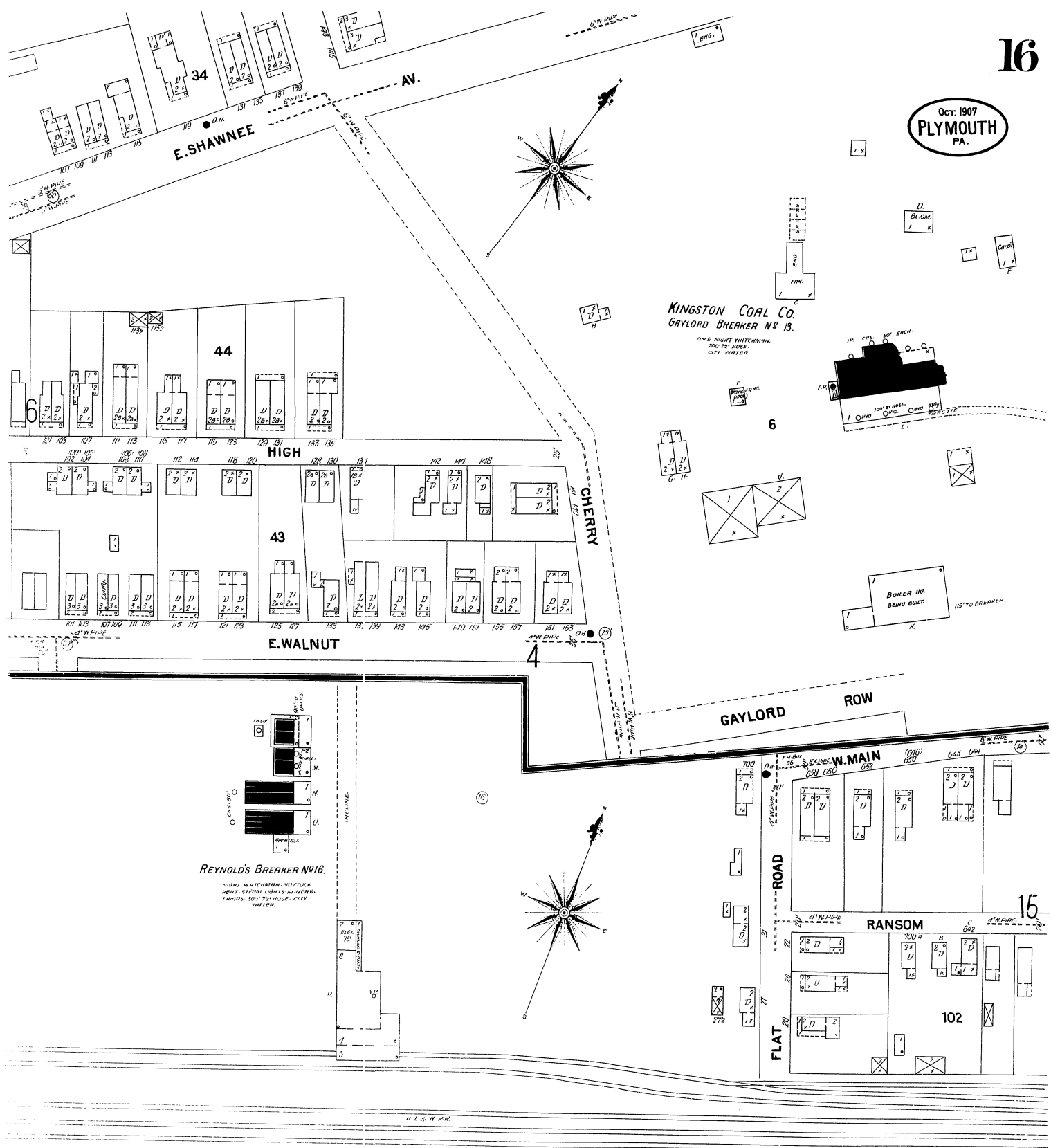


OCT. 1907
PLYMOUTH
PA.



REYNOLD'S BREAKER No. 16.
 NIGHT WATCHMAN MISCELL.
 HEAT STEAM LIGHTS DIMMERS.
 LAMPS 200 70 HOUSE CITY
 WATER.

KINGSTON COAL CO.
GAYLORD BREAKER No. 13.
 ONE NIGHT WATCHMAN
 100 FT. HOSE.
 CITY WATER.

BOILER NO. BRIND BUILT
 1870 TO BREAKER

Scale of Feet.
 50 100 150

Division
 12 '55
 Library of Congress