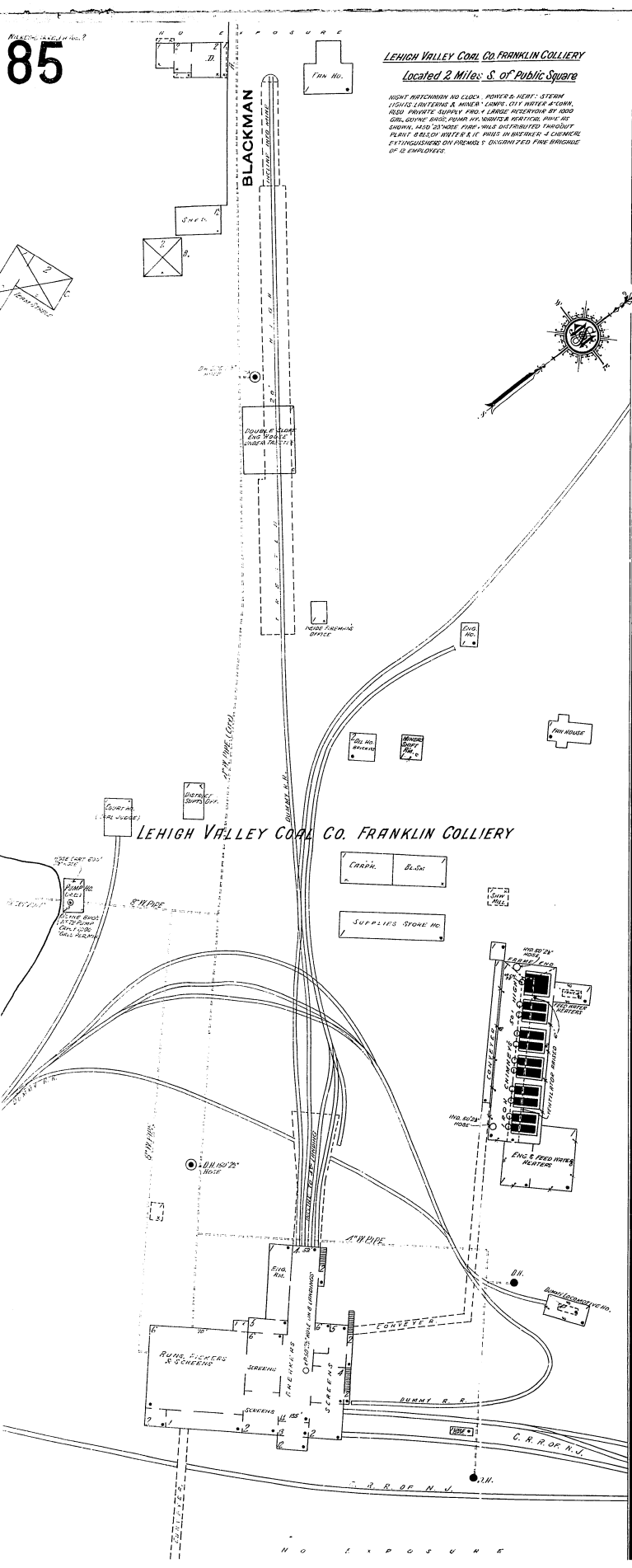
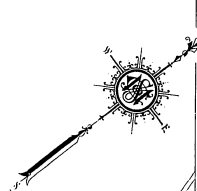


**LEHIGH VALLEY COAL CO. FRANKLIN COLLIERY**  
*located 2 Miles S. of Public Square*

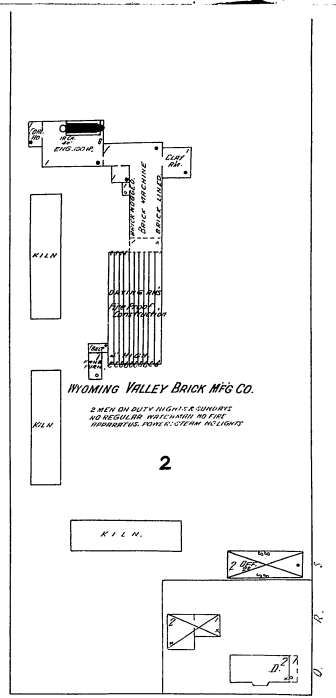
NIGHT WATCHMEN NO LOCK, POWER & HEAT. STEAM LIGHTS, LANTERNS & MINER'S LAMP. CITY WATER & CORK, ALSO PRIVATE SUPPLY AND LARGE RESERVOIR BY ROAD. GRILL, OVEN, BREAD, PUMPKIN, SQUASH, VEGETABLE, JAM, AS SHOWN, AND TO WASH. FIRM HAS DISTRIBUTED THROUGH PLANT. BREAD BAKERS & C. BREAD IN BAKERY & C. BAKERS. EXTINGUISHED BY PREMIER'S ORGANIZED FIRE BRIGADE OF 12 EMPLOYEES.

**BRESLAU**

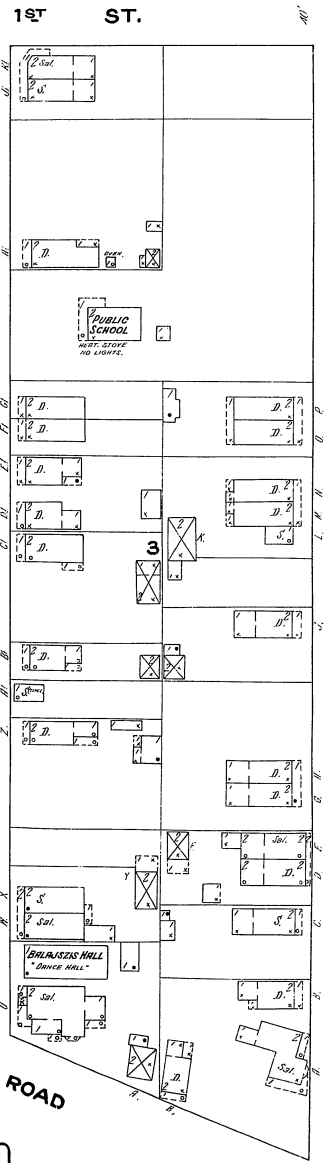
BLACKMAN



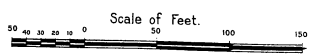
30'



1



OLD RIVER ROAD



PLYMOUTH AV.

PLYMOUTH AV.