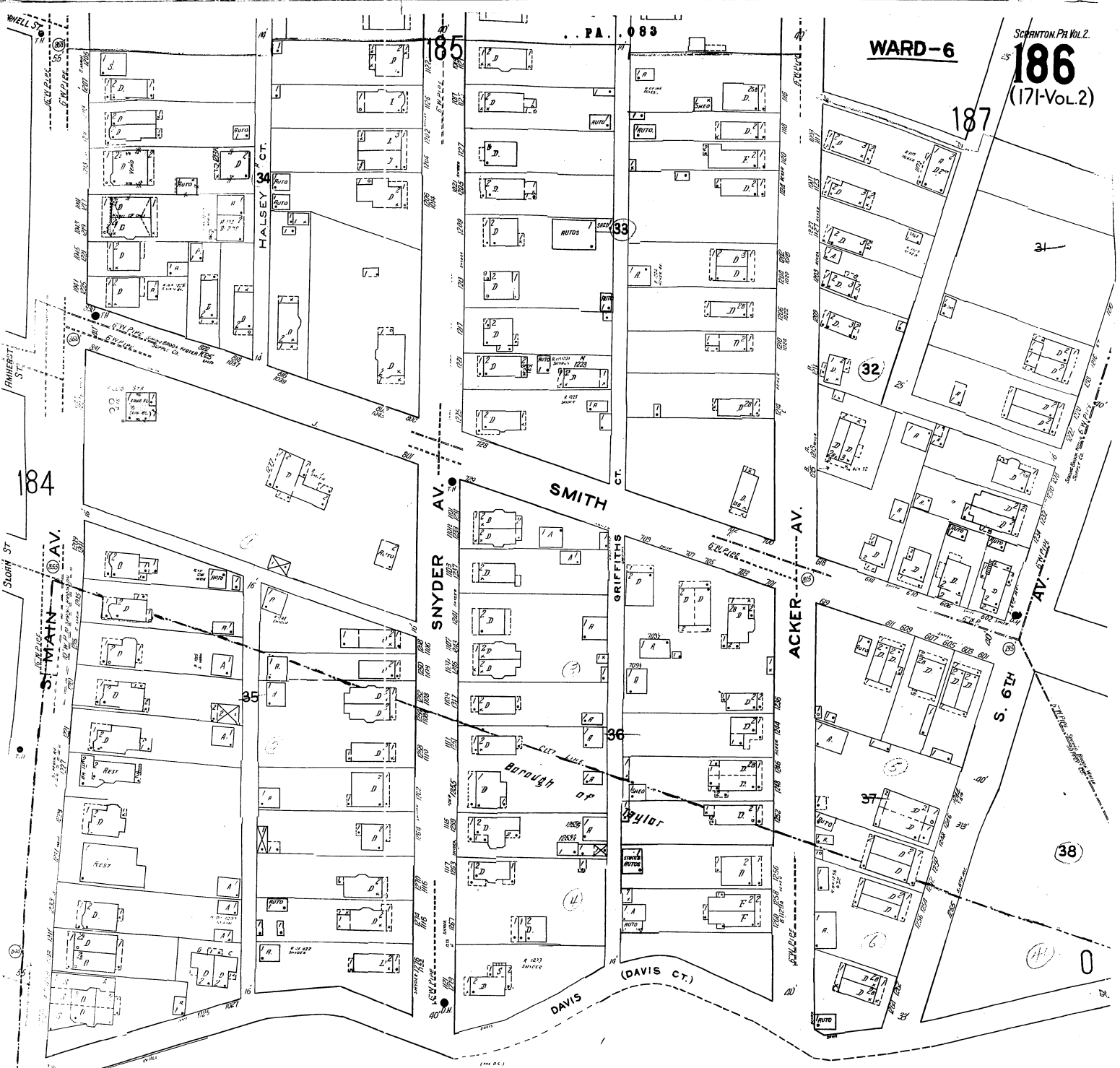
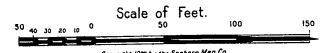
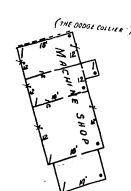
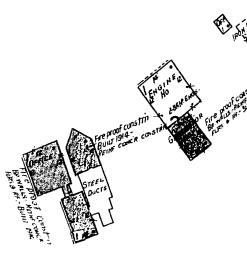


WARD-6



**THE DODGE COLLIERY
GLEN ALDEN COAL CO.**

WATER-POWER - DAMAGED SOURCE - 11 "SYNTHONS" - RAINY RAININGS -
HOT-STEAM FROM BRUEVE BRANK - LIGHTS - ELEC. - POWER-STEAM



Copyright 1929 by the Sanborn Map Co