

63

WEST PITTSSTON

Susquehanna River

SPRING BROOK WATER SUPPLY CO.
PUMPS: 8 No. 1 - 3200 G.P.M.
17 No. 2 - 1000 G.P.M.
ELECTRIC - 1000 VOLT

N. SUSQUEHANNA

OKETO ST. ARBITRARY

ANN

43

CLYDE

OKETO ST. ARBITRARY

FAN No. 1
FAN No. 2
FAN No. 3

3

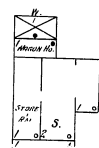
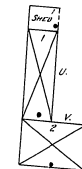
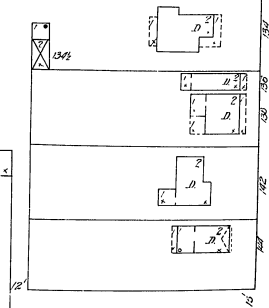
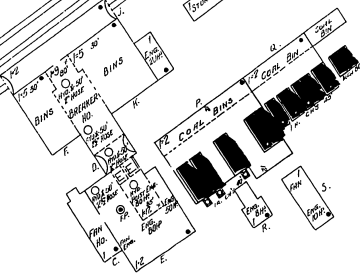
YORK AV.

43

ELM

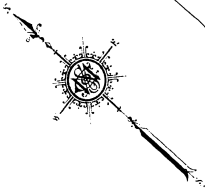
CLEAR SPRING COAL COMPANY

POWER SYSTEM & ELECTRIC MOUNTING SYSTEMS ELECTRIC
MOTORWORKING AND CLOCKWORKING AND TO THE STEAM SYSTEM THEY
WILL JUSTIFY THE INVESTMENT SERVICE POWER PLANT FOR
LATER FROM THE PLANT 2-1000 G.P.M. AND 22 H.P. DETACHED ABOUT PREMISES -
IN UNDERMINING THE EXTENDING



EXETER 47

Scale of Feet



CUM PILE

63