

BUNKER HILL

No 1

FIELD BOOK

1570

DEC 13 1894

Return to
Pennsylvania Coal Co
Dunmore, Pa.

Bunker Hill No. 1

Dec. 13th 1894

137.

CONTINUED FROM
CONTINUED IN BOOK

Bunker Hill No. 1

Dec. 13th 1894

From PX 46 along line

P 85 S53.30E 47.05R 43.8
 86 N6-25W 44.6 to PX 50

From pt on line bet PX 15 and PX 16 85'

87 S6-30W 40.1
 P 88 S82-25W 40.9 30NR
 89 S82-00W 105-38R N7-45E 31.8

From P X 52

P 90 S0-20E 81.20L 45.2
 P 91 S81-40E 10R.2 37NR
 92 N0-50W 17.30L 69.5 -35 face
 93 N18-20W 25.5 to X 55
 P 94 S75-00E 62.50R 55.9 36NR
 95 N12-10W 90.1 to X 57
 P 96 S83-45E 95.45L 52.9 33NR
 97 N0-30E 124.1 -15 face

From PX 61

P 98 S45-30E 72.15L 136.8
 99 N62-10E 84.6 20NR
 A N41-10WA 111.1 down to 64
 P 100 S41-10E 166
 101 N56-00E 76.30R 37.9 21NR
 P 102 S47-30E 36
 103 N56-25E 49.2 34NR
 A N49-20W 55.7 to 60

Limbs in Book 103

See 1

my face
 16' coal - 16'
 8' slate - 8'
 4' coal - 4'
 6' bone - 6'
 0' coal - 0'

15 30 PL 50 73 85 90 face 3
 5.18 5.14 8- 8.8 9.4
 R 65 L 30 35
 6- 10-
 to PX 75 32PR 82PR
 R 50 4 PR 50 at 85' PX 87 + 17 face
 L 31 85 7.9 11.16 11.18
 + 8 PR

to pt bet 15 and 16 45.9 face 15 12 PL
 7.9

R 20 45.2 80 84 face
 9.16 9.16
 50 60 - 65 PR 83 NR + 10 PR
 L 43 50 69
 14.15 15.16

110 PR
 35 45 face } L 45 50
 6.19 11.13
 + 7 PR

to PX 59 L 34 77 50 100
 9.16 12.18
 R 50 50 120 40 100 136.8 + 20 face
 L 5 50 99 15.12 15.12 18.7

40 50 - 50 PR 63 NR + 10 PR
 R 16.55 50 100
 L 37.75 17.18 4.15
 16.6 46 face
 22.9

+ 12 PR
 36 + 20 face
 15.12
 7.12 PR
 R 54 8
 L 43

PX 85
 See
 coal - 15 1/2
 slate - 2
 coal - 2.6
 slate - 0.2
 coal - 2.3
 bone - 0.3
 coal - 0.6
 7 0 1/2 coal

See PX 90
 coal - 19
 slate - 0.2
 coal - 24 3/4
 slate - 0.1 1/4
 coal - 28
 bone - 0.2
 coal - 0.9
 coal 80 3/4

From 103

P 104 S46 50 E
 105 N49 10 E 87 35 L
 106 N38 30 W 90 50 L
 P 107 N52 25 E
 B N48 50 W
 108 S48 50 E
 P 109 N56 10 E 114 40 L
 110 N48 25 W
 111 N49 35 E 92 25 L
 112 N42 50 W

70'
 37'
 23
 44 L
 104 S
 14 6
 89 9
 19 1/2
 83'
 127 9
 to X 74

27 NR
 - 30 fad
 35 NR
 data to 74
 up ch
 27 NR
 - 40 fad
 25 NR
 to X 74

R 44
 L 30 70
 + 16 f R
 + 16 f R

50 70' + 20 fad
 16.9 18.9

R 16 56
 L 45 77
 50
 15 14
 14.6 + 20 fad
 13.14

50 57 1/2 R 72 NR + 8 f R
 R 52 96
 L 40 81
 50 100 1269 to PX 72
 15 10 19.9
 40 54 1/2 R 61 NR + 9 f R
 at 40 5 P 112 55 fad
 R 2 10.15
 R 34
 L 34.75 11.14 7.26

From PX 78 next ch

113 S52 00 E 9 0 R
 P 114 S48 00 E
 115 N53 10 E 101 50 L
 P 116 S40 45 E
 117 N48 40 W

67'
 67.9
 91
 52 4
 133' to PX 80

31 NR

R 28
 L 49
 R 44
 L 20
 50 67'
 13.12 18.6
 50 67.9 100 fad
 18.13 12.18

50
 40 - 61 f R 74 NR + 12 f R
 R 32
 52 60 fad
 14 15

From PX 80 R 33 84

From pt on line bet PX 42 and 80

118 S74 30 E

62

28 1/2 f PX 42
 R 58
 10 15 20 26 PR 40 50 62 70 fad
 -2 -7 -14 4.18 10.18 16.12 12.15

From PX 42

119 N47 10 E 115 40 L
 120 N68 30 W
 121 S32 10 E

22 NR
 38.4
 63 1/2 - 28
 8 13
 58.3 up to 42

+ 7 f R
 38 fad
 20 46 PL 50
 97 9.3 5-

Set up at PX 84 on slope BS

122	N 85 53 W	0-10R	N 85 10 W	138.2	
	S 77-32 W				
P 123	86.45L	S 4 W		30.2	
	S 87-05 E				
124	94.37L	East		131.7	
	N 72-47 E				
125	2008L	N 70 40 E		75.4	to 84
	N 85.55 W				
126	26-18R	N 84 40 W			to 84

April 10th 1895

Set up at Sta 49 and		BS to Sta 48 to Survey			
P 1	S 58 49 E	95.26R	S 36 20 W	92.7	19052R
			S 52-06 W		
P 2	S 36 20 W	1529R	S 51 55 W	82.8	3057R
			S 57-46 W		
P A	S 52 00 W	17008R	S 57 50 E	79.4	
			S 78-32 W		
P 3		26.26R	S 78 30 W	143.1	5252R
			S 68 26 W		
P 4		10.06L	S 68 25 W	140.1	2812L
			N 88-58 W		
P 5		22-36R	N 89 W	43.6	4512R

Return to PX 4 to run chambers

P 6	S 68-10 E			146.7	R 63 90
					L 46 90
P 7	N 62-40 E	6430R		62.2	
B	N 59-40 W	1150L		60.2	R 1158
					L 40
C	N 71-30 W			73.2	to 64
P 8	S 52 50 E			112.7	R 42
					L 661
P 9	N 39° E	8600R		60.1	38NR
					R 24 46
D	N 63 05 W	1-05R		77.8	L 20 48
E	N 62 00 W			136.1	to PX 3
P 10	S 54 40 E			123.8	-14

198.9

50	100	138.2	150	dl 195 PX 122	+18) acc
9.7	8.6	7.8	9.6		8.8
173.30L					
21NR	+ 8	JR			+ third
18914L	30	60	Jan		
	10.6			260	110
Set 84	83	83			
	7				
42.35R					

see Book Scrap Page 46

Old Marble Bunker Hill under Dump Ground

at 32 wall	50	79	and wall	80	92							
2.4	2.4	2.4		4.2	6.2							
	20	50	60	76 PL								
	4.6	2.9	6.5	7.4								
R10 86	0	3PL	10	20	25	35	45	50	79.4	115		
	10	10.4	9.0	14.3	13.10	13.29	3.30	2.34	333			
143		20	35	50	at 85!							
2.11		8.2	10.4	9.7			8.4	7.12	4.12	1.10	49	4.14
filled in	35	45 PL	55	75	100	116 PL	133	140				
L 87 80R	35	64	518	224	4.12	6.7	9.11	11.8				
	5	15	25	35	43	46	46	46	46	46	46	46
N 89 W	10.3	8.2	8.10	7.5	5.6							
132	0	12 PL	20	32	40	50	65	80	135	146.7	+ 22	
120	4	5.10	18.6	32.1	28.3	22.10	18.15	27.21	24.13	23.15	10	
33NR	+ 12	JR										
	25	60.2										
	12.28	12.27										
course 4 down	L 19											
76L	98L	30	50	100	112.7	+ 30	Jan					
		1614	1719	18.2L	17.19							
+ 12/R												
		50	77.8									
45		22.21	13.19									
R 7.31.67		50	80	100	117PR							
L 27.68.97		23.13	20.10	6.11	123.9	9.5						
R 33.62	92	115	54	100								
L 31.64.95		2115	1812		1518	+ 27	Jan					

4

11 N43 50 E 109 50 L
 12 N66 00 W
 13 N55 45 W 110 L
 F N34 35 E 90 15 R
 14 N66 45 W
 60 32 NR
 72 -20
 95.5
 36.9 60 PXA
 140.8 65 85' ⊕

April 11, 1895.

1. Set up at Sta 122nd B.S. to 84

127 N85-43 00-50 R N84-53 W 128³ 1.40 R
 84-24 R S1-30 E 31.9 168.48 R
 85-03 L S85-30 E 184.20 to 123 170.05 L
 130 1-31 L S89.40 E to 124 3-03 E

From pt. bet. 123rd & 124th 32.0 from

131 S39-10 W

April 22nd 1895

Set up at Sta 49th B.S. to Sta 48
 558-49 E 95-26 R S36-37 W 92⁴ 190 52 R
 560 05 E

Set up at Sta 53^{DIS and} B.S. to Sta 56
 561 59 W 20-18 L S41-41 W 165 40 36
 562 00 W 17 52 L S23-49 W 254 1/2 35 43 L
 45 49 R N69-38 E 62.9 91 37 R

+ 11/R
 R 50 72.6
 223.63 11.20 16.18
 217.52 96. 50 95.5
 12.17 18.12
 36 NR

R 29.65.
 course 3 L 12.40 83.110. 30 50 80 100 120 PR
 25.11 20.9 18.4 9.5 12.1
 (SWIDE GW)

Bunker Hill Slope

Soft 59. 35 50 75 100 dist 150 175 185 face
 7.7 9.8 7.9 9.8 8.8 8.8 10.6
 24 NR + 10 F. R.
 Soft 59 121 25 50 75 100 125 150
 7.6 9.4 12.4 12.4 13.4 11.6

124 on airway of Slope

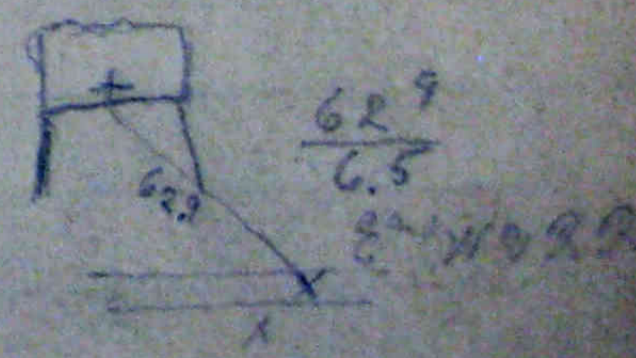
10 19 PR 25 30 40 50 60 68 face
 2 9.4 6.12 6.18 7.19 10.16 21.12

Bunker Hill

see Book Scrap Page 46
 to Sta 1 in Drift under Dumping Ground

52 of Scale House. Page No 46 Scrap Book

to center of Latches
 to " " Track
 to X on Rock entrance to old Tunnel



Bunker Hill No 1

September 3rd 1895

Setup at PX127 and TS S to X122 on

132	1894 old duct	4-24S	100	8-49
133	N 45-53 W	N 56-27E	99.4	68-32
134		S 49-57W	26.8	81-32
135		S 68-50E	33.8	122-20R
136		S 87-37E	91.6	37-34
		S 85-30E		4-15R

Set up at sta A above and BS to X132

138		S 0-29E	56.4	to B? corner
-----	--	---------	------	--------------

From pit bet PX123 and X128 34.8 from

139		S 67-25W	62.4	
140		S 29-55E	87.45	46.7
141		N 62-20E	46.5	- 15 face
142		S 24-40E	80-33R	48.1
143		N 55-55E	139.9	to pit bet PX123 and X124 23.7 from X124

From PX94 in chamber

144		S 0-30W	2-50R	75.8	- Sept 4
145		S 3-20W	89-32S	79.7	
146		S 89-00E		40.5	
147		N 4-10W	83-26S	118.3	- 30 face
148		S 87-40E		38.1	
149		N 6-10E		167.7	to pit on line of X127 and X28 produced 14.0 from
148		S 87-40E		92.3	
149		S 3-35W	60-28R	35.5	

New Instrument

Slope

18.7	30PR	50	75PR	85	dist
29PR	45	45	13-4	-2	9-12
2-10	5-12	13-10	17-8		+ 20 face
0	dist				+ 10 face
6-9	8-8				
15	18	25			
6-1	8-1	14-3			
0	5PR	6	15	20	40
8-8	8-	30-8	17-9	7-12	4-12
					8-9

16	20	30	43PR
-12	10-8	8-5	9-7

25	45PR	dist	95	105 face
-6	4-12	7-15	14-13	

32NR	+ 14 fr	
dist		
15-12		
30NR	36.9PX142	56 fr

40	50 face	Sept 41
8-21		

RA 34 73	35	dist
Sept 34	17-12	12-16
RA 48	45	dist
	11-18	15-11
		+ 15 face
	25NR	+ 17 fr

Sept 34	75	115	35	45	75	100	dist
	14-13	14-18	18-10	20-8	16-12		

29NR	+ 21 fr	
30	40 face	RA 33 84
23-0		Sept 37
		79 120
		12-16
		11-19
		11-15
		2-21
		2-19

31NR	45	64 fr	83NR	+ 7 fr
5	22PR			
-4	11-4			
				dist + 25 face
				8-22

See PX 144
 coal - 16 1/2
 slate - 02
 coal - 24 1/2
 slate - 01
 coal - 28 1/2
 bones - 02 1/2
 coal - 01 1/2
 coal - 78 1/2

150 N64-05E 63.5 10PX61

From PX98 in chamber

PX 151 S41-10E 88-14R 159.1

152 N47-05E 44.8

153 S52-50E 54.6

PX 154 N20-00E 65-30R 44.2

A N45-45W 153.8 10PX100

155 N85-30E 117.6

B N46-20W 107.2 10PX104

156 S46-20E 83-47S 31.3

157 N49-50E 42

C N56-30W 65-50R

158 N9-20E 45.1

159 N43-15W 115.2 10PX108

From fr. bur x108 and x109 43 from x108

160 S44-05E 156.6

161 N66-55E 71-47R 42.7

162 N41-15W 30.9

163 N66-30E 66-20R 98.9

D N47-10W 132.3 10PX112

PX 164 S47-10E 46.1

165 N64-45E 69-50R 37

E N45-25W 130 10PX114

PX 166 S45-20E 59 109

167 N36-30E 83-34S 89.5

168 N47-05W 110 10PX116

Rx 16 61 143 182 50 100 125 190 200 face
Sift 37 79 115 22-6 17-10 12-16 12-16

31NR + 15 gr

Rx 34 dist 20-8 + 20 face
Sift 11

25 NR + 14 gr

Rx 20 45 55 face } Rx 20 68 105 50 80 100 130
Sift 14-14 20 58 85 132 10-14 8-21 10-14 5-16
33 NR 30R 70 71 gr

Rx 19 61 0 50 100
Sift 15 60 97 7-19 8-18 9-18
Rx 16 65 dist 17-10
Sift 7 66

73.4 PX 156 85 face
22-7

31NR + 13 gr

25 35 face } Rx 52 50 85
Sift 5-24 32 54 16-13 22-5

31NR + gr

Rx 35 31 PX 158 55 face } Rx 10 78 0 45 80
Sift 14-10 20 58 110 10-14 12-15 12-16

Rx 23 64 85 138 55 85 100 130 dist + 25 face
Sift 37 83 103 12-12 10-15 6- 14-10 16-13

30NR + 13 gr

Rx 25 115 PX 161 55 face } Rx 45 99 136 dist 70 100 135 162 164 to Rx of x109
Sift 30 13-13 38 77 120 14-7 12-11 13-16 8-17

28NR 62 gr 75NR + 9 gr

Rx 0 47 87 133 50 100
Sift 47 79 130 13-18 14-16
Rx 30 dist 24-6 10 face

20NR + 14 gr

Rx 32 74 50 75 100
Sift 57 100 14-13 14-14 14-14
Rx 36 dist 15-13 + 10 face
Sift 7

28NR 45 60 gr 72NR + 11 gr

63 PX 168 80 face } Sift 36 72 50 80 100
11-17 14-14 13-13 14-15

February 29th 1896

Set up at PX 137 and BS to PX 132 in
 170 N56-27E 5-59R N64-00E 155.8 7.7 from X10
 Set up at PX 132 and BS to PX 127 on Slope
 171 N29-17W 7-55R N83-35W 92.5 15.50R
 Set up at PX 132 and BS to PX 127 on Slope
 172 N59-17W 38-03S S50-30W 65 76-07E
 Drawn from X134 of X128 28.3 from X134
 173 S61-20W 21.2
 174 S19-55W 44
 175 N76-55E 36-59S 88-57E 71.2
 A N39-55E 42.4 to PX 128 on Airway
 176 S12-00E 53.4
 B N65-50E 118 to PX 139
 177 S65-50W 85-47E 34.6
 178 S20-00E 47.6
 C N58-00E — 35/21.3 40 face
 179 S33-50E 42.6
 180 N62-05E 3-18R 127.1
 181 N65-20E 73.5 to PX 142
 Drawn from PX 144 in chamber
 182 S86-35E 80-40R 95.3
 D N5-50W 201.9 to PX 147 -20 face
 183 S86-35E 33.1
 184 N51-30E 55-10S 15-40R 56.9
 E N3-35W 128.3 to PX 149
 F S3-35E 55.7

New Instrument

Airway to Right of Slope

25 50 75 96.5 PX 170 110 118 120 PR 130 NR
 15-9 10-5 9-14 14-10 25-8 28-9 4-9 1-13
 12 PS 30 40 NRS 50 60 62 93 dist 15
 14-2 13-4 13-5 14-17 14-21 15-4 9-10 7-12
 12 PR 35 dist +10 face
 6- 6-10 9-9
 on Airway
 Set 87 dist 24 PR 30 40 PS 70 85 100 112 PX 173 130
 -7 3-8 2-13 4-13 10-11 14-14 12-15 10-15
 10 20 25 28 PS 35 40 45 63 71.3 PX 174 80 90 face
 -4 -4 -9 5-14 25 7-9 166 7-5 6-9
 RA 105 15 25 45 dist 100 120 126 PS 135
 Set 81 17-4 18-5 19-6 17-15 10-9 12-6 13-7 12-
 36 NR + 11 fr
 RA 64 30 45 80 100
 Set 39 12-8 5-22 10-16 12-12
 dist 60 76.5 PX 177 90 face
 15-15 14-15 14-22
 36 NR + 19 fr
 20 50 100
 22-9 23-9 26-2
 34 NR dist 47 fr
 4-2 1- 3-6 60.9.15 ft bet X 9 & X 10
 45.5 from X 9
 RA 37 10 50 70 100 dist
 Set 32 75 115 4-6 10-5 13-5 20-7 23-4
 29 NR 40 58 fr 70 NR + 8 fr
 RA 28 69 104 150
 Set 25 73 118 160 50 100 150
 9-15 11-15 15-11
 21 NR dist 11 fr
 RA 45 87 50 100
 Set 18 65 15-12 16-12
 0 25 30 35 40 47 NRS 53 NRR + 11 fr
 10-17 23-6 23-13 26-10 28-4 3 4

From course 184
 185 N67-10E 38.4
 186 N3-10W 109
 PX 69
 187 S42-05E
 Set up at PX 184 and B S to course 184
 TRUE N74-15E
 188 S3-35E 77-50R N76-00E 162.4 - 25.30
 9.2
 189 S42-15E 65-50E 82.8
 190 N71-55E 36.9 to PX 151
 PX
 191 S45-40E 69-14S 169.
 PX 98.1
 192 N65-05E
 G N45-40W 166 to PX 154 - 30 face
 193 N65-05E 90.1
 PX 63.3 = 47 to PX 156
 194 S40-00E
 PX 79.7
 195 N59-15E
 196 N35-40W 24-58E 121.9 - 20 face
 197 N60-40W 41.5 to PX 158

From ⊕ 44.7 course 196 above

198 N64-40E 66-01R 96.7
 H N49-20W 103.9 to PX 161
 PX
 199 S49-20E 28.6
 200 N31-35E 72-18E 43.2
 201 S40-45E 29.4
 PX
 202 N54-55E 82-40R 42.2 to PX 164
 I N42-25W 119 - 32 face
 203 N54-55E 46.1
 204 N49-45W 81-39E 15.2 - 9 face

31 NR + 16 fr
 50 73 PR 100 115 128 PR 150
 19-17 20-7 16-5 8-7 7-8 -4
 25 45 PR dist + 25 face
 8 4-12 8-12
 175 PS 180
 19- 19-
 20 to pt bet X 98 and X 151
 78.5 from X 98 P⊙
 Page 7
 10 NR 15 27 NR 50 82 NR 95 102 NR 125 NR
 11-3 30 5-12 14 7-9 50- 6-10 8-7 12-2
 R# 49 15 25 PS 45 dist 100 face
 22- 16-1 18-5 18-9
 R# 24
 Self 40 86 126 50 100 130 dist 200 205 face
 11-13 12-13 15-13 14-14 13-13
 30 NR 45 63 fr 78 NR + 17 fr
 50 100 120
 12-13 13-14 10-16
 R# 33 75 107
 Self 36 75 114
 26 NR 45 57 fr 73 NR + 12 fr
 40 face
 30 dist + 25 face
 13-17 15-15
 27 NR 45 56 fr 68 NR + 15 fr
 40 face
 44.7 ⊕ 75 100 dist
 12-19 6-19 8-16 4-20
 R# 84 118
 Self 33 66 100
 R# 30
 Self 28
 31 NR 55 60 fr 79 NR + 15 fr
 45 face
 50
 14-15
 dist 45 50 55 60 face
 18-12 16-12 12-13 4-11
 25 NR + 7 fr
 dist + 15 face
 16-12
 25 NR + 13 fr
 50 65 100
 10-19 9-19 8-19
 30 NR + 9 fr
 dist 55 to PX 166
 14-15

9

205 N 48-35

43.5

206 S 42-502 84-192

24.7

207 N 52-502

44.3

208 N 41-55W

23.5

10 x 168

Rx 29

30NR + 10 gr

dist + 25 face

30NR + 9 gr

15/10-16 33 face

Bunker Hill Sept 29 1878

Set up at P x 3 ² and B.S. to P x 4 Bunker Hill
N72°22'E 45'

Not Blue Ink
8 c. m.
1
2
3
4
5
6
7
8
9
10
11
12
to stake down Boulevard

26-06R	S81°32'E	98.7	52-12R
47-56L	S82—E	81.6	95-53L
54-33R	N50°32'E	530.5	109-04R
40-30L	N74°55'W	54.1	81-00L
22-35R	N74—W	146.9	165-11R
64-18R	S64°35'W	150.3	128-35R
87-21R	S65—W	206	174-41R
25-00L	S7°40'W	553.4	50-00L
4-41R	S7-50W	169.3	9-22R
36-30R	S71°58'W	412.1	73-00R
76-34L	S72-05W	220.7	153-09L
13-58R	S20°41'E	81.65	27-56R
47-56R	S20-40E	98.75	95-53R
26-05L	S46°58'W	98.75	95-53R
	N76°39'E		
	N76-45E		
	S66°51'E		
	N36°35'E		
	N36-35E		
	N50°33'E		
	N51-20E		
	N81°31'W		
	N80—W		
	S72°24'W		
	S72-22W Error 0°02'		
	S72—W		

Tunnel No 1. to locate Boulevard + S.A. Waters Lot

to 11 in Tunnel
to stake outside of Tunnel
to stake
of No 2 Tunnel 51' to nail in timber Mouth of tunnel
to stake on Boulevard 68 M. Edge of aw shaft, 74 F Edge
50 100 dist
185.8 28-0 23-2

to stump North corner of S.A. Waters Lot, or Monument
50 100 135 200 255 300 340 400 445 500 dist
31-2 6434R 4+30R 76-14 6-30 0-29 61-18 37-3 20-57R 4445R 22-1

to stake 2
to stake 1 in Tunnel
to P x 3
to P x 4

11. Bunker Hill Levels
From Mouth of Tunnel No 2 to

731	1159.46		1152.15
		3.58	1155.88
11.62	1170.54	0.54	1158.92
11.95	1182.07	0.42	1170.12
10.76	1192.83	0.00	1182.07
11.25	1203.95	0.13	1192.70
11.33	1215.28	0.00	1203.95
11.87	1226.89	0.28	1215.00
7.00	1232.31	1.58	1225.31
		1.95	1230.36
5.00	1225.85	11.46	1220.85
11.79	1235.54	2.10	1223.75
11.98	1247.34	0.18	1235.36
2.88	1249.38	0.84	1246.50
		1.04	1248.34
0.85	1238.30	11.93	1237.45
0.46	1226.84	11.92	1226.38
1.12	1215.96	12.00	1214.84
0.03	1204.05	11.94	1204.02
0.49	1192.54	12.00	1192.05
0.56	1181.10	12.00	1180.54
0.51	1169.61	12.00	1169.10
4.71	1162.34	11.98	1157.63
3.31	1156.25	9.40	1152.94

Oct - 1st 1898.

Stump in L.A. Mat ^{RES} Lot.

on Top of last store near Drift No 2
on Rail at mouth of Tunnel + 6.12 to timber

top of Sta 8, on Boulevard
on top of fence on "

on surface at stump North corner of L.A. Mat

12

1156.25

4.61

1159.17

1.69

1154.56

6.97

1152.20

3.23

1155.94

on but stone

on rail at mouth of Tunnel

Set up at Px 18 and B & to Px 19

N75-15E
 72-00L S3-15W
 88-34L S4-40W 172.6
 86-53R S85-19E 93.3
 75-05L S85-10E 93.1
 62-11R S1-34W 107
 N19-36E 31.7
 N23-08W 31.7
 N22-W 35'

Set up at P@ 46.5 on course B
 S85-19E
 79-50R S5-29E 135.3
 53-35L S5-15E 30.1
 63-13R N40-48E 30.1
 N41-E 30.1
 N22-24W 25
 N22-W 25

Set up at P@ 133 on course A
 S3-15W
 81-00R N84-15E 162.00R
 61-19R N84-30E 118.6
 79-35R S34-26E 129.8
 38-48R S34-E 40.8
 69-00R N16-28W 42.5
 39-35R N57-15W 10.7
 81-12L N27-03W 12.6
 62-00L N56-28W 63.1
 N56-W 104.5
 N2-22E to P@

Set up at P@ 88.4 on course I
 N83-57E
 57-46L S26-11W 22.4
 65-28R S26-30W 25.3
 S30-35E 25.3
 S30-E 25.3

Set up at P@ 46.1 on course I
 N83-57E
 78-30R N17-33W 32.6
 52-26L N17-W 32.6
 N31-31E 33.7
 N32-E 33.7

Px 19
 174L
 opposite Px 18
 177.07L
 up bha
 to wall
 to wall
 B
 up bha
 to wall
 to wall

A
 162.00R
 to Px 11
 to wall
 to stone
 to stone
 to P@

to wall
 to wall
 above
 to wall
 above

over Quarry Level 74.0

Rx 4.4 128 166
 L32 88.1
 Rx 35.82
 L34 87
 Rx 15
 Rx 15
 Rx 15
 Rx 15

Rx 35.82
 L34 87
 Rx 15
 Rx 15
 Rx 15
 Rx 15
 Rx 24
 L17 58.8
 Rx 20

Pillar
 Pillar
 on course J
 above

5	15	35	50	75	100	133	150	dist
-11	12-8	8-12	12-21	14-25	12-20	9-20	12-18	12-18
20	33	65	75					
1-7	3-11	7-1	7-5					+ 12 F.R
30	65	dist						
14-20	13-21	12-20						

35	70	100	dist
12-20	11-18	18-15	18-14

20	31	66	77	100		+ 13 FR
1-9	3-10	7-3	10-2	1-		
0 PR	10	20	36.2	81	100	dist 134 PR
15-12	21-12	15-13	15-15	12-15	13-18	12-17 13-17

13	25	35	43		+ 8 FR
-8	7-	5-10	-10		
15	35	53	65	85	
17-8	6-10	7-9	-9	-6	



14.

S
T

57-11R S 38-52E 28 to wall
57-10L S 27-V 23.2

Set up at P 90° on course A

P
U
V
W
X
Y
Z
A
I
2

61-13R N 65-E 64.6
26-38L S 38-W 39 to wall
61-45L S 3-20W 33.5
82-55R S 32-55E 37.4
45-30R S 69-E 46
20-30L N 44-E 15.6 to stone
45-13L N 20-E 8.3
69-40L N 5-30W 60.5 to wall
85-38L N 20-V 62.1

Set up at P 87° on course 19

P
29
J.M

N 75-85 E 85-24R S 19-20 E 76.5 to P 29
20-04L S 40 E

Set up at P 38° on course 19

N 75-15 E 42-55L S 34-W 11.6 to wall
53-02R S 50-E 12.4

Set up P 20° on course 18

N 72-19 E 70-49L S 1-30W 179.6
4-29R S 6-W 140.7 to B Hole

38.6

20 FRR 32 N P R Y F R L 45 55
7- 13-2 -5 -10

13 PL 30 dist
-1 -1 Ref
14 PR 25 dist 35
2- 4- -12
20 35
-21 -12 dist .5

29.5 to F.R

5 STONE
8 PILLAR

30 45
15- 6-
10 20 30 45 50 60
-9 -7 -5 -12 -7 -1

8 PR 25 35 55 dist
4-14 10-10 18-9 14-16 13-21
40 75 100
15-19 16-13 17-12

Pillar

" 10
P 34

" 12
L 29

old mark

N 32 50
L 40 76
P 36 76
L 16 51 92

old mark

old mark for to locate S. a. v. B. Hole

N 31.80, 122 38 to P 2 55 8" P 1 50 100 dist
L 3.39, 84.123 9-23 3-27 8-30

L. A. Watrous

15 P_x 13

Sec (5)

Coal 1-5
 Rock 0-2
 Coal 2-1
 Slate 0-1
 Coal 2-5
 Bone 0-3
 Coal 0-7
 Coal 6-6
 888 Sec (6)
 Coal 1-6
 Rock 0-2
 Coal 2-0
 Bone 0-1
 Coal 2-6
 Bone 0-3
 Coal 0-7
 Coal 6-7

(7)

P_x 191 Fall
 Coal 1-4
 Coal 2-0
 Bone 0-1
 Coal 2-1
 Bone 0-4
 Coal 0-8
 Coal 6-1
 P_x 202

Sec (8)

Coal 1-6
 Rock 0-3
 Coal 2-2
 Bone 0-1
 Coal 2-7
 Bone 0-4
 Coal 8
 Coal 6-11

Sec (9)

P_x 4 2 Line dia
 top coal up
 Coal 1-4
 Slate 2
 Coal 2-0
 Bone 0-1
 Coal 2-6
 Bone 0-4
 Coal 0-8
 Coal 6-6

P+71 - 3 Crow hole down ch

Sec (10)

Coal 1-4
 Slate 0-2
 Coal 2-2
 Bone 0-1
 Coal 2-10
 Bone 0-4
 Coal 0-8
 Coal 7-0

P_x 20

Sec (11)

Coal 1-6
 Rock 0-2
 Coal 2-0
 Bone 0-1
 Coal 2-5
 Bone 0-4
 Coal 0-8
 Coal 6-7

P_x U

Sec (12)

Coal 1-4
 Rock 0-2
 Coal 2-2
 Bone 0-1
 Coal 2-0
 Bone 0-4
 Coal 0-6
 Coal 6-0

No tunnel + 4 ft down

Sec (13) Fall away

Coal 2-0
 " 1-4
 Slate 0-3"
 Coal 1-0
 Coal 4-4

P_x 7

Coal + R 1-0
 Coal 2-0
 Bone 0-1
 Coal 1-3
 Bone 0-6
 Coal 0-11
 Bone 0-3
 Coal 4-2

16

- Dec. 5. 1902 -

Setup at Cut Stone, Bunker Hill
blunners to recovery No 2 blift.

Bunker Hill

Breaker and B. S. to Spire of Catholic Church

Party
J.P.
W.N.A.
G.W.O.
H.P.
E.S.



To point on Log
To Luck in wood 88 Mouth of Tunnel

208	N7-08W	S75-44E	75.	187.13L
	N7-08W	S75-E		1051L
	68-36L	S51-38W		1012R
209		S54-W	88.5	to old PX3
PX	52-38L	N77-39W		5935L
210		S77-W	85.9	to PX4
PX	50-43R	S72-34W		2146L
211		S75-W	45.4	S5-15L
PX	29-47L	S61-41W		to PX5
212		S67-W	45.5	6709R
PX	10-53L	S29-57W		25-13L
213		S34-W	93.	to PX7
PX	42-37L	S63-31W		59-15R
214		S65-W	80.4	to PX8
PX	33-34R	S50-55W		2040L
215		S53-W	54.8	1641R
PX	12-36L	S80-32W		2226L
216		S84-W	106.7	to PX11
PX	29-37R	S70-12W		5235R
217		S71-30W	101.1	4739L
PX	10-20L	S78-32W		2-13R
218		S78-W	92.1	to PX28
PX	8-20R	S67-19W		5726R
219		S70-W	75.7	to PXA
PX	11-13L	N86-23W		5234L
220		N97-W	68.1	to PX45
PX	26-18R	S69-47W		7253R
221		S72-W	119.	4848L
PX	23-50L	S70-54W		to PX47.
222		S73-W	77.9	
PX	1-07R	N80-23W		
223		N78-W	65.9	
PX	28-43R	S73-20W		
224		S75-W	100.4	
PX	26-17L	S70-14E		
225		S70-E	42.1	
PX	36-26R	N85-22E		
226		N87-E	106.1	
PX	24-24L	S1-58E		
227		S81-E	68.9	
PX	87-20L	S85-26E		
228		S83-E	53.9	
PX	9-12R	S7-26W		
229		S8-W	124.	
PX	87-08L	N61-58E		
230		N64-E	49.8	

18 PL	25	dist							
8-5	10-2	8-6							
15	29 PL	dist							
5	6-11	13-4							
10	30 PR	50	75	dist					
7	6-9	1-12	3-8	9-4					
20	40	65	dist						
10-2	14-1	12-2	7-9						
10	30	40	dist						
1-21	1-14	4-11	9-11						
5	7 PL	30	50	75	100	dist			
-19	7-5	10-6	16-3	14-3	11-6	9-9			
25	35	60	80	90	93 PL	dist			
2-16	7-14	2-12	2-14	7-20	7-4	9-5			
25	50	75	dist						
7-7	8-8	11-4	9-6						
25	40	60	dist						
4-11	1-12	3-11	10-16						
5	7 PL	25	50	dist					
-18	7-6	13-1	10-5	5-11					
25	50	75	100	dist					
11-4	10-3	7-8	7-7	7-8					
25	45	55	70	dist					
3-10	2-15	1-16	1-18	5-21					
25	40	dist							
13-7	12-2	3-10							
25	50	75	dist	+9	fall	3			
8-9	9-6	10-3	10-						
10	25	35	dist						
12-1	19-2	25-	19-6						
3 PL	25 NAR	41 FAR	75	100	dist				
5-6	8-12	5-12	7-8	15-1	-6				
8 PL	15	35	45	dist	80	Core			
-11	4-12	10-19	19-12	19-11					
10	23 PL	30	42 NAR	dist					
8-13	5-5	8-8	8-10	72-					
0	6 PR	20	50	100	118 PR	dist	157	fall	
-10	10-6	9-9	21-9	16-13	18-10	37-9	1-21		
10	32 NAR	dist							
5-11	8-9	-10							

Determine whether station is to be used

- 230
- 231
- 232
- 233
- 234
- 235
- 236
- 237
- 238
- 239
- 240
- 241
- 242
- 243
- 244

S 7-08 W
 54-50 L S 9-W 28.
 N 71-45 E 1935 R
 9-47 R N 74-E 142. to PX 16
 S 7-28 W 161.9
 64-17 L S 11-W 52.6
 S 81-20 E 5350 R
 26-55 R S 78-E 129.4
 S 13-32 W 41.6
 85-08 L S 15-W 122.8
 N 62-47 E 73.4
 35-53 L N 65-E 118.0
 S 9-19 W 97.15
 53-28 L S 12-W 196.7
 N 76-35 E 56.7
 13-48 R N 79-E 32.1
 N 75-15 E 32.1
 1-20 L N 76-E 36.5
 N 72-21 E 59.
 2-54 L N 74-E 82.1
 S 86-57 E 82.1
 20-42 R S 85-E 82.1
 N 51-09 E 82.1
 41-54 L N 53-E 82.1
 N 30-54 E 82.1
 20-15 L N 35-E 82.1
 N 29-21 E 82.1
 1-33 L N 33-E 82.1
 S 77-37 E ERROR 002
 73-02 R S 75-E 82.1

1935 R
 to PX 16
 5350 R
 7146 L
 2736
 to PX 18
 2-40 L
 to PX 19
 5-47 L
 to PX 20
 2123 R
 to PX 21
 83-46 L
 to PX 22
 40-21 L
 to PX 23
 206 L
 to PX 30 & 210
 146-05 R
 to PX 209

10.9
 66 117
 43, 123
 77, 116
 72, 121
 46, 96
 70, 115
 73
 75
 6
 69
 10
 10
 107, 172
 133

DEC 6

Set up at P 63 on course 226
 N 85-22 E S 8-12 W
 77-10 L S 10-W 36.5
 Set up at P 50 on course 232
 N 71-45 E S 14-40 W
 57-05 L S 17-W 59.
 Set up at P 82 on course 232
 N 71-45 E S 2-50 W
 68-55 L S 5-W 82.1
 Set up at PX 233 and B.D. to PX 232
 S 7-28 W S 3-27 E
 10-55 L S 2-E 163
 Set up at PX 235 and B.D. to 234
 S 13-32 W S 1-19 E
 14-51 L S 1-E 229.5

mail in x timber
 R 36 cone
 28
 21
 36, 76
 83
 82, 132
 159, 153
 79, 119, 165, 203

S 15 PR dist + 10 face }
 8 11-7 9-8
 21 MAR 50 PR 75 100 120 dist
 12-6 7- 3-13 12-7 7-11 4
 74 PR 35 50 100 135 dist
 11-5 15-5 21-9 28-14 12-19 9-22
 20 30 35 PR dist
 7-12 5-20 7-7 12
 9 PR 20 35 45 80 100 dist
 6 10-6 13-8 34- 23-7 13-15 12-19 6-25
 10 25 MAR dist
 3-11 9-8 4
 5 17 PR 30 50 100 dist
 9 6-6 11-6 17-9 12-18 9-23
 25 34 PR 50 dist
 7-11 11 6-10 4-10
 25 31 MAR 46 PR 54 PR 75 100 dist
 4-10 5- 7-16 7-7 7-7 7 9-6
 30 50 61 PR dist
 2-13 2-14 14 5-10
 12 MAR 23 PR + PR dist
 4-10 6-10 5-8
 22 MAR 35 PR 50 67 MAR 83 PR 100 111 MAR 130 PR 147 MAR
 7-5 7-6 7-10 3-9 7-7 4-9 3-10 10-9 10-4
 10 20 40 48 PR dist
 16-3 10-3 1-10 2-10 10
 4 PR 13 PR 20
 6-7 5-6 8-
 6 PR 20 dist
 7-8 9-9 8-12
 5 17 PR 33 PR dist + 7 face
 6 10-7 17-11 13-16
 0 5 PR 20 50 dist + 18 face }
 20 2-15 9-17 9-19 10-21
 50 100 135 dist + 4 face }
 12-15 17-16 17-16 16-12
 50 100 150 200 dist + 8 face }
 6-25 6-23 8-18 11-19 10-17

Entered 10 and not recorded

Set up at P X 237 and B S to 236 mch
 P X 251 S9-19 W S1-25 E 263'
 10-34 L S1-25 E 263'

Set up at P X 34.5 on course 238
 P X 252 N76-35 E S2-35 W 162.7
 74-00 L S5-W 162.7
 P X 253 4-24 L S1-W 239.5 to P X 144

Set up at P X A and B S to P X 18 to run
 P X 254 S3-15 W S2-15 E 253.3
 5-30 L S0-30 E 253.3

Set up at P X F and B S to P X north
 P X 255 S5-29 E S0-55 E 141.9
 4-34 R S1-W 141.9

Set up at P X C and B S to P X B
 P X 256 S1-34 W S3-41 E 121.2
 5-15 L S2-E 121.2
 P X 257 7-23 L S9-30 E 45.9 on course
 83-25 R S72-21 W 29.9 166.5 R
 P X 258 82-01 R S75-W 44.2 m Hdg
 82-01 R N70-57 E 44.2 to P X 184
 P X 259 74-31 L N73-E 184. to P X 149
 74-31 L N3-34 W 184. to P X 149
 P X 260 58-20 R S50.43 E 49.8
 58-20 R N71-21 E 49.8
 P X 261 0-24 R N74-E 78.9
 0-24 R S50.39 E 78.9
 P X 262 58-00 R S55-E 58.7
 58-00 R N79-00 E 58.7
 P X 263 7-39 R N84-E 127.9
 7-39 R S44.05 E 127.9
 P X 264 56-55 R S41-E 167.5
 56-55 R N45-07 E 167.5
 P X 265 33-53 L N47-E 37.9
 33-53 L N43-48 W 37.9
 P X 266 57-12 R N41-W 223.4 to P X 64
 57-12 R S64-21 W 223.4 to P X 64
 P X 267 71-51 L S65-W 29.4
 71-51 L S6-20 E 29.4
 P X 268 70-41 L S2-E 118.2
 70-41 L S34-52 E 118.2
 P X 269 80-47 R S30-E 118.2
 80-47 R S30-E 118.2

229
 50 150 150 200 240 dist + 5 face
 8-20 6-27 8-29 10-21 9-18 72-15

40.78.115.156
 31.76.117.162
 21.78.117.157.207
 39.80.118.154.200.236

0 7 PR 20 30 50 80 100 125 dist
 -164-12 8-9 19-11 18-11 13-16 15-15 14-13 13-18

50 100 150 200 dist + 15 face
 8-19 7-24 3-24 6-22 15-14

libra see Page 13
 37.82.121.165.211
 2-26 6-27 5-26 9-25 5-22 18-19 dist + 20 face

libra
 24 71.100.
 52 69.106
 50 100 120 dist + 7 face
 12-13 19-17 20-12 20-10

next libra see page 13
 50 100 dist
 13-19 9-22 8-19
 25 35 42 NR + 10 FR
 15-15 13-12 5-12
 15 dist + 5 face
 5-9 5-9
 25 40 NR
 11-4 12-3

60.100.143
 32 73 120 164
 3 9 25 50 100 150 dist
 5-3-22 13-25 12-21 18-11 19-10 24-9

10 18 PL 35 dist + 10 face
 8-8-19 18-12 15-12
 28 NR 50 dist
 6-9 7-10 8-7
 5 27 PL 35 dist + 10 face
 6-8-12 16-9 23.8
 24 FAR 50 65 NR 98 NR + NR 111 NR
 8-8 9-7 10-5 14-6 12-8

13 PL 25 30 55 75 100 125 150 dist
 15-10 17-12 10-12 16-12 15-12 17-12 12-13 14-12 14-12

12 26 NR
 10-7 10-8
 10 15 50 100 150 200 dist
 10-8-21 13-19 13-15 12-17 16-16 18-

14 PL 35 42 NR 63.3 to P X 149
 -8 3-10 7-8

10 30 57 PL 100 145 165 170 174 NR
 2-3-7-23 9-21 15-15 17-11 2-5 2-5

13 PL 25 50 65 PR 100 dist + 8 face
 -8 -3 -9 3-14 14-15 23-15

Set up at P_x 264 and B.S. to P_x 264
 N45-07E S46-43E
 271 88-10 R S45-E 191.7
 272 30-26 R N77-E 156.9 to P_x 104
 273 58-14 R S43-E 180.7 to P_x 156
 274 5-10 R S39-10E 151. up chn

Set up at P_x 89' on course 272
 N75-33E S48-07E
 275 56-20 R S47-E 297.9

Set up at P_x 39.4 on course 272
 N75-33E S53-54E
 276 50-33 R S53-E 90.8 to P_x 154
 277 8-14 R S43-45E 196.4

Set up at P_x 271 and B.S. to P_x 266
 S43-03E S44-16E
 278 2-27 R S42-30E 127.9

Set up at P_x 265 and B.S. to P_x 264
 S44-05E S42-16E
 279 1-49 R S40-25E 124.8

Set up at P_x 29 and B.S. to P_x on bln
 S19-20E S37-38E
 280 18-18 L S36-E 215, to P_x 63
 220

Set up at P_x 9.7 on course 240
 N72-21E S34-50E
 281 72-49 R S33-E 179.3 up chn

Set up at P_x 61 on course 240
 N72-21E S26-22E
 282 81-17 R S25-E 137.9

OVER

on counter above
 R 34.68 112 155
 L 50.85 120 152 189
 15 24 PL 50 75 100 125 150 175 dist
 10-14-14 17-15 17-14 18-14 12-12 15-12 18-12 19-12 160 FRL
 23 FR 33 NR 39.4 P_x 65 FRL 77 FRL 80 NAL 89 FRL 122 FA 133 NR
 10-7 7-60 -3 9-6 9-6 9-
 10 PL 30 50 100 125 150 dist
 21-10 17-12 19-10 20.7 21-9 19-10 23-10
 25 50 100 125 dist + 10 face
 21-10 17-10 18-14 20-14 10-15

on counter 2nd chn
 R 38.72 116 149 193 226 238
 L 31.74 116 161 202 246 285
 10 22 PL 50 75 100 125 150 175 200 225 250 dist + 12 face
 1-4-27 11-26 8-23 8-21 8-19 10-21 12-18 16-14 16-14 17-17 20-17

again 1st chn
 R 25.60 91
 L 63.80 117 150 193
 L 13.50 83 127 161
 5 30 PL 60 dist
 10-12-23 14-18 19-12
 25 50 75 100 125 165.2 P_x 192 dist + 18 face
 14-12 14-14 21-14 16-14 15-12 19-16 24-16

on counter
 R 10 55 88
 L 35.68 109
 25 50 75 100 dist + 7 face
 18-12 18-12 18-14 21-10 17-13

in last long chn
 L 29 73 110
 25 65 80 100 dist + 20 face
 17-16 18-16 12-18 10-17 7-16

see page 14
 R 33.74 118 155
 L 17.53 92 134 173
 50 100 150 200 dist
 15-17 15-15 16-12 19-9 18-9

R 33 72 112 150
 L 37 80 116 157
 9 PR 25 50 100 150 dist
 3-13 17-8 26-7 20-6 25-7 26-7

R 29 68 104
 L 47 92
 10 PR 15 35 50 100 dist
 3-16 12-8 24-7 21-11 17-17 7-24

Copied from Book 208

Dec 6-1902 Bunker Hill

Set up at PX 212 BS to PX 211 to

PV	300	33-54R	N 84-25W	241.5	6748R
PV	301	0-12L	N 84-37W	128.3	025L
PX	302	4-24L	N 89-01W	102.0	8.48L
PV	303	34-17L	N 56-42E	99.1	68.33L
PX	304	11-08R	N 77-53W	41.2	22-16R
PV	305	40-35L	S 61-30W	48.1	
PX	306	38-04L	S 52-55W	31.9	76-08L
PV	307	52-49R	S 74-16E	37.6	105.37R
PV	308	13-08L	S 87-24E	91.5	26-15L
PX	309	2-08R	S 84-1E	184.2	4-16R
PV	310	1-31L	S 85-16E	143.1	3-02L
PV	311	28-12L	S 86-47E	46.1	56.34L
PV	312	3-19L	N 65-01E		to PX 212
PV	313	10-52R	N 64-00E		6-39L
			N 61-42W		to PX 211
			N 72-34E		21-44R
			N 75-1E		to PX 210

Copied from Book 208 P 62-63

Set up P 98.7 course 310 BS to PX 309

PX	314	49-08L	S 44-05W	56.9	
PX	315	25-18R	S 43-00W	76.3	to PX 142
PV	316	5-13L	S 69-23W	188.7	
			S 69-30W		
			S 64-10W		
			S 64-20W		

Set up at P 55.5 course 310 BS to PX

PV	317	25-50L	S 67-25W	212.3	
PV	318	7-40L	S 67-30W	86.6	to PX 178
			S 59-45W		
			S 59-50W		

Set up P 141.0 course 309 BS to PX 308

PV	319	31-25L	S 63-19W	54.8	to PX 139
PV	320	2-29R	S 63-00W	194.5	to PX 177
			S 65-48W		
			S 65-50W		

2nd Plumrose Vein

Palmer Oswald Shopland

Run down Slope

13	14	15	16	17	18	19	20	21	22	23	24	25	26	27	28	29	30	31	32	33	34	35	36	37	38	39	40	41	42	43	44	45	46	47	48	49	50	51	52	53	54	55	56	57	58	59	60	61	62	63	64	65	66	67	68	69	70	71	72	73	74	75	76	77	78	79	80	81	82	83	84	85	86	87	88	89	90	91	92	93	94	95	96	97	98	99	100	101	102	103	104	105	106	107	108	109	110	111	112	113	114	115	116	117	118	119	120	121	122	123	124	125	126	127	128	129	130	131	132	133	134	135	136	137	138	139	140	141	142	143	144	145	146	147	148	149	150	151	152	153	154	155	156	157	158	159	160	161	162	163	164	165	166	167	168	169	170	171	172	173	174	175	176	177	178	179	180	181	182	183	184	185	186	187	188	189	190	191	192	193	194	195	196	197	198	199	200	201	202	203	204	205	206	207	208	209	210	211	212	213	214	215	216	217	218	219	220	221	222	223	224	225	226	227	228	229	230	231	232	233	234	235	236	237	238	239	240	241	242	243	244	245	246	247	248	249	250	251	252	253	254	255	256	257	258	259	260	261	262	263	264	265	266	267	268	269	270	271	272	273	274	275	276	277	278	279	280	281	282	283	284	285	286	287	288	289	290	291	292	293	294	295	296	297	298	299	300	301	302	303	304	305	306	307	308	309	310	311	312	313	314	315	316	317	318	319	320																																																																																																									
13-5	12-4	12-3	12-4	13-3	12-4	11-8	11-4	10-5	10-6	10-7	8-8	25	50	75	100	115	125	150	175	200	225	250	275	300	325	350	375	400	425	450	475	500	525	550	575	600	625	650	675	700	725	750	775	800	825	850	875	900	925	950	975	1000	1025	1050	1075	1100	1125	1150	1175	1200	1225	1250	1275	1300	1325	1350	1375	1400	1425	1450	1475	1500	1525	1550	1575	1600	1625	1650	1675	1700	1725	1750	1775	1800	1825	1850	1875	1900	1925	1950	1975	2000	2025	2050	2075	2100	2125	2150	2175	2200	2225	2250	2275	2300	2325	2350	2375	2400	2425	2450	2475	2500	2525	2550	2575	2600	2625	2650	2675	2700	2725	2750	2775	2800	2825	2850	2875	2900	2925	2950	2975	3000	3025	3050	3075	3100	3125	3150	3175	3200	3225	3250	3275	3300	3325	3350	3375	3400	3425	3450	3475	3500	3525	3550	3575	3600	3625	3650	3675	3700	3725	3750	3775	3800	3825	3850	3875	3900	3925	3950	3975	4000	4025	4050	4075	4100	4125	4150	4175	4200	4225	4250	4275	4300	4325	4350	4375	4400	4425	4450	4475	4500	4525	4550	4575	4600	4625	4650	4675	4700	4725	4750	4775	4800	4825	4850	4875	4900	4925	4950	4975	5000	5025	5050	5075	5100	5125	5150	5175	5200	5225	5250	5275	5300	5325	5350	5375	5400	5425	5450	5475	5500	5525	5550	5575	5600	5625	5650	5675	5700	5725	5750	5775	5800	5825	5850	5875	5900	5925	5950	5975	6000	6025	6050	6075	6100	6125	6150	6175	6200	6225	6250	6275	6300	6325	6350	6375	6400	6425	6450	6475	6500	6525	6550	6575	6600	6625	6650	6675	6700	6725	6750	6775	6800	6825	6850	6875	6900	6925	6950	6975	7000	7025	7050	7075	7100	7125	7150	7175	7200	7225	7250	7275	7300	7325	7350	7375	7400	7425	7450	7475	7500	7525	7550	7575	7600	7625	7650	7675	7700	7725	7750	7775	7800	7825	7850	7875	7900	7925	7950	7975	8000	8025	8050	8075	8100	8125	8150	8175	8200	8225	8250	8275	8300	8325	8350	8375	8400	8425	8450	8475	8500	8525	8550	8575	8600	8625	8650	8675	8700	8725	8750	8775	8800	8825	8850	8875	8900	8925	8950	8975	9000	9025	9050	9075	9100	9125	9150	9175	9200	9225	9250	9275	9300	9325	9350	9375	9400	9425	9450	9475	9500	9525	9550	9575	9600	9625	9650	9675	9700	9725	9750	9775	9800	9825	9850	9875	9900	9925	9950	9975	10000

Set up at P ⊙ 61.° Course 309 B to P x

Px	386-16 E	572-58 W	
321	21-46 L	373-20 W	164.3
Px		S 24-15 W	
322	48-43 L	324-35 W	25.0
		N 15-24 W	to Px 174
323	57-34 L	N 16-00 W	

Set up at P ⊙ 27.° Course 308 B to P x 308

Px	387-24 E	S 59-47 W	
324	32-49 L	S 59-00 W	145.0

Set up at P x 303 B to P x 302

Px		S 51-51 E	
325	71-27 R	S 50-30 E	34.5

Saint Patrick's day, 17th March 1903 K & S Dist.

Set on cut stone on S. J. & S. Line, on line of

1	S 48-64 L	79-14 L	N 51-52 E	191.4	158-28 L
A		19-40 L	N 51-55 E	94.9	
2		81-52 R	N 32-00 E	180.9	103-44 R
B		70-12 R	S 46-10 E	54.0	
3		30-54 L	S 46-15 E	231.4	61-48 L
C		49-07 R	N 23-50 E	70.3	
4		10-41 L	N 23-45 E	162.9	
5		57-19 L	S 77-10 E	191.0	114-37 L
6		24-36 L	S 76-00 E	130.0	49-12 L
7		8-40 R	N 28-03 W	128.0	17-19 R
E		35-51 L	N 27-45 W	107.5	71-41 L
8		59-19 R	S 87-51 E	85.0	
F		44-12 L	S 87-30 E	179.4	88-24 L
G		18-52 R	N 45-31 E	53.7	
H		51-50 L	N 45-50 E	102.0	Stake
		33-00 R	N 20-55 E	65-59 R	

See page 22 for details

309
Rt. 69 198
L 50 90

309
Rt. 75
L 87

15	35 PR	50	75	100	125	140 PR	160	185 PR	195	200
-8	2-15	5-15	12-16	10-18	9-18	11-16	13-16	8-23	6-21	
20	34 PR	52 PR	65	66 face						
-6	6-8	8-14	4-							
15	27 PR									
-3	6-									

20	25 PR	44 PR	75	88	90	100	105	125	135	dist
-10	4-9	6-12	17-12	13	-25	13-22	-14	11-18	10-21	8-11

22 PR	dist
10-6	7-7 + 4 face

#7631

to locate center of 1st Dr. Hill
S. A. Waters Barn and B to cut stone up the Hill

to a point 128 on line of Barn solid rock
Stake side road out crop $\frac{50}{0-0}$ $\frac{100}{15}$ $\frac{150}{15}$ $\frac{Dist}{5}$
to small sapling cut off (Cross over line here?)
back in steep side road $\frac{100}{4}$ $\frac{Dist}{1}$
Oak tree, cross to this point
to stake West here, no corner
to 11th near, Cor. Reservoir $\frac{100}{-20}$ $\frac{150}{-25}$ $\frac{180}{-25}$ $\frac{Dist}{-25}$
B. 30-64 Top B 20-277
60 B 30-277 B 30-437

Oak tree top hill
Dist 40-5 face
to fence Post along Boulevard
top hill on solid rock
S.E. cor. air shaft

Set at A B S & A 1 Su page 21

543-195

543-205

9	N 32-12 E 75-31 L			
		1102	1288.76	1277.79
T.P.	10.78	1297.20	2.34	1286.42
A in page 21			3.82	1293.38
T.P.	12.97	1309.71	0.46	1296.74
T.P.	5.42	1314.44	0.69	1309.02
B			3.70	1311.34
2			8.99	1305.45
T.P.	12.82	1327.26	0.00	1314.44
C			1.80	1325.46
3			5.95	1321.31
D			11.40	1315.86
4			7.31	1319.95
* T.P. & keep			0.00	1327.26 *
T.P.	5.52	1321.77	11.01	1316.25
			8.64	1313.13
5			11.10	1310.67
			17.00	1304.77
T.P.	0.69	1311.45	11.01	1310.76
T.P.	2.29	1301.47	12.27	1299.18
6			12.56	1288.91
T.P.	3.09	1291.72	12.84	1288.63
T.P.	0.05	1280.54	11.23	1280.49

Ends on Survey of out crop 1st Div. View

$\frac{30}{-15 \text{ Rock}}$ $\frac{100}{-8 \text{ Rock}}$

March 18th 1903

On cut stone on S. 1/4 S^{1/2} line

Solid Rock

Stake at edge road.

take line corner over View line

Stake side Road

to stake View line but no corner

Lowest point in Reservoir N.W. Cor.

Bottom Hill 20 Rk Sta 5

Sta 6

7

T.P.
8

0.39

1268.64

1229

1268.25

1087

1257.77

to level to points on top hill

T.P.*

1280

1340.06

1327.26

see page 22

T.P.

4.61

1345.51

1.10

1338.90

5.92

1339.59

6.41

1339.10

T.P.

0.73

1335.99

10.25

1335.26

4.37

1331.62

T.P.

1.21

1325.24

11.96

1324.03

10.25

1314.99

15.00

1310.24

T.P.

2.41

1316.80

10.85

1314.39

E

10.46

1306.34

T.P.

0.84

1304.79

12.85

1303.95

G

17.00

1287.79

1280.54

10.66

1269.88

2.000

1260.54

Sta 7

30 Rt. - Sta 7

Sta 8

on ground near tank

on rock top hill bet. tank + Reservoir 22 from tank

Course 5 $\frac{50}{-64}$ to this elev, 1339.10

" " $\frac{100}{-27}$ " " " 1331.62

Course 6 $\frac{60}{-27}$ to this elev, 1314.99 Solid rock

" " $\frac{100}{-43}$ " " " 1310.24 " "

to oak tree

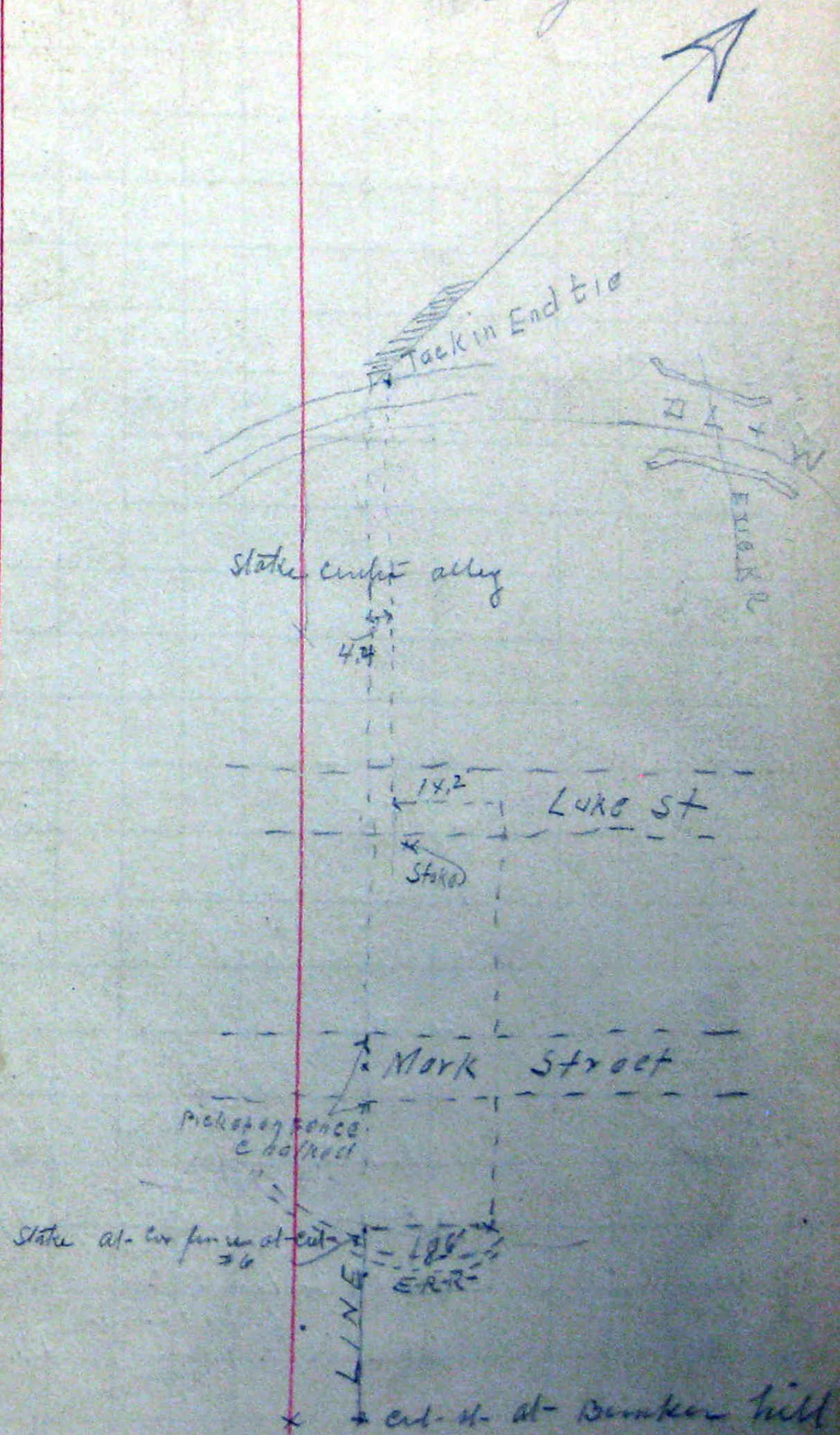
Solid Rock

24

August 3 - 1904

Swat - Cut	at - at - Bunker hill	break
N-7-08W	41-534	N49-01W
		N49-00W
		83-4272L

Line between Taylor and Truppel
 to spine of Catholic church to establish
 to supposed corner in Osterburg



Aug - 15 1904

Set up at Pt. on pipe at Bradys
for to Survey to Drift Old Bank

- A S47-22 E
- B see Book 201 Page 35
- C
- old P+1
- Px
- 51
- Px
- 52
- Px
- 53
- Px
- 54
- Px
- 55
- Px
- 56
- Px
- 57
- Px
- 58
- Px
- 59
- Px
- 60
- Px
- 61
- Px
- 62
- Px
- 63
- Px
- 64
- Px
- 65
- Px
- 66
- Px
- 67

86-50 R	S39-28 W	678	173 40 R
1-48 B	S41-16 W	372	to x cut in
70-55 R	S50-W	186	to intake
62-19 L	N65-W	79	to nail in
25-03 R	S42-52 W	138	12438 L
26-05 L	S50-W	58	to Px 1 W
44-15 L	S74-55 W	63	5006 R
5-39 L	S75-W	85	down slope
23-52 R	S23-47 W	89	52-10 L
22-25 R	S24-W	58	alt 8 22 L
1-05 R	S20-2	78	to Px 11
49-40 L	S18-08 W	56	11-18 L
43-15 L	S18-W	26	alt
71-05 L	S42-00 W	37	4745 R
63-35 L	S41-45 W	68	to Px 4
42-40 R	S64-25 W	110	4451 R
6-30 L	S64-30 W	85	2-10 R
69-50 R	S65-30 W	19	to Px 5
38-22 L	S65-W	51	9920 L
36-09 L	S15-40 W	105	8629 L
61-31 R	S16-W		142-10 L
	S27-25 E		Px 8
	N81-30 E		12709 L
	N82-2		alt
	N17-55 E		85-20 R
	N18-2		1300 L
	N60-35 E		13940 R
	N61-2		
	N54-05 E		
	N54-2		
	S56-05 E		
	S56-E		
	N15-43 E		
	N15-45 E		
	N20-26 W		
	N20-W		
	N77-12 E		
	N78-E		

Store and B.S. to fit on Rail street car line
on Hill No 1

RR1st track for rail at Dunmore Shops
on side of S.E. & W connection with ERIE

tie 8" from Pt. Rail opposite Drift	25	45	60	dist
20 PL	45	75	100	125
3-8	2-11	4-7	4-8	4-8
18 PR	30	43 PL	dist	
7-7	4-7	1-8	4-8	
10	16 PR	30	55	
17 PL	35	45	70	dist
8-1	4-10	3-12	5-8	9-3
25	50	70	dist	
6-4	8-3	6-4	2-8	
2-0	4-0	dist		
1-8	7-3	8-3		
25	34	50	dist	
6-4	8-3	4-6		
15	40	dist	+6 face	
9-3	3-9	3-7		
5	15	25 PR		
3-5	2-1	2-9		
6-2	6-3	27 DR	+ 5 FR	
25	50	dist		
4-7	2-10	8-4		
25	50	75	100	dist
6-3	4-6	2-8	7-3	4-9
25	50	75 PR	dist	
4-8	10-2	8-5		
4 PR	dist			
13-6	5-8			
24 PD	40	dist		
6	6-7	11		
OPR	30	60	80	dist + 14 face
11-7	9-4	11-7	8-9	2-13

Set up at PX 64 ³⁰ B&B PX 63
 556-05 E N79-51 E 88-08 L
 68 L 114-04 L 1280-E 102.8

Set up at PX 24² on course 65
 69 N15-43 E 87-53 R S76-22 E 175-51 R
 70 41-18 L N62-20 E 44, 8239 L
 71 14-02 R N76-24 E 72 2807 R

Set up at PX 38⁷ on course 53
 72 S20-28 E 85-30 R N65-02 E 171-00 R
 73 21-26 R N86-28 E 4252 R
 74 28-01 L N58-27 E 5603 L
 75 26-55 R N85-22 E 17.5 5250 R

Set up at PX 39 on course 52
 E S23-47 W 71-37 L S47-50 E
 S48-E

Set up at PX 52 ^{2nd} B&B PX 53
 F S20-28 E 44-15 R N23-47 E 58 8831 R
 G 26-05 R N24-E 79.8 to PX 1
 H 62-20 R N49-52 E 186²
 I 70-56 L N50-E
 J 1-48 L N67-48 E 14151 L
 K 86-50 L N41-16 E 372⁸
 N40-E 678¹
 S47-22 E 000
 S45-E

Set up at PX 51 ^{2nd} B&B to PX 1
 76 S74-55 W 1-57 L S72-58 W 3-53 L
 77 16-40 R S73-W 153, 3320 R
 S89-38 W 51.2 to PX 1
 S89-45 W

L2282

PA 32

L27

L38

on Annular

PA 8

to check survey to find of leg

to PX 1

PA 64

PA 8

3320 R

to PX 1

$\frac{25}{3-6}$ $\frac{35}{9-4}$ $\frac{50}{9-4}$ $\frac{75}{9-7}$ $\frac{dist}{8-6} + 3 face$

$\frac{6 PL}{124}$ $\frac{25}{9-3}$ $\frac{dist}{1-14}$

$\frac{25}{6-9}$ $\frac{dist}{8-7}$

$\frac{25}{11-3}$ $\frac{50}{}$ $\frac{dist}{69} + 15 face$

$\frac{11 PL}{46}$ $\frac{20 PL}{3-6}$ $\frac{dist}{}$

$\frac{0}{5-5}$ $\frac{dist}{3-5}$

$\frac{20}{3-6}$ $\frac{dist}{6-3}$

$\frac{dist}{5-4} + 8 face sand$

$\frac{7 PR}{1-9}$ $\frac{25}{5-6}$ $\frac{44 PR}{6-5}$

to Survey 19 up towards shop

$\frac{25}{104}$ $\frac{50}{11-3}$ $\frac{80}{7-7}$ $\frac{100}{4-9}$ $\frac{125}{3-8}$ $\frac{dist}{9-3}$

$\frac{30}{10-3}$ $\frac{46 PR}{11-4}$ $\frac{dist}{1-4}$

Set up at sta C ^{one} B to sta
 L N 67-49 W 2103R N 46-46 W 4205L
 M 52-52L S 80-22 W 279.4 to point
 N 5034R S 47-2 487.9 to Palmer point
 " 10108R "

B for to connect with Palms run -
 D-F + W. RR
 locate 200 ft. line

Set up at \odot 289.9 on course B for to
 341-16 W 89-43R S 47-2 147.8
 89-43L S 41-16 W 327.9
 89-43R S 49-01 E
 89-43R S 50-2

2384 from E + W. WRR or #6 switch

Aug. 18.9904 Set up at \odot 289.9 on course B to check
 341-16 W 87-58 R S 49-2 218.1 to point on
 2 32-12 R S 15-2 248.7 to point on
 3 3-15 L S 18-00 E 304.5 on E + W. V RR
 4 41-51 L S 62-2 302.1 pt up track
 5 26-27 L N 48-16 W 352.9 down track
 6 4-07 R N 44-W 204.2 to pt on RR
 7 20-13 L N 72-W 216.3 to pt 200 FT
 8 19-30 R S 50-50 S to pt. 34901

Survey above ^{one} Survey E + W V RR at #6 Junct.
 Stone near Bridge
 Stone side of road.

100	200	dist P.T.
8-11	8-11	center
100	200	300
-9L	-10L	-3L

190 to out crop
 -21 left to crop
 Ref. to V em

on course P above TANGENT
 from line Sta. P. above.

on stone near edge of cut, Sta. Q above.

Set up sta 6 ^{one} B to Sta 5 to
 N 44-09 W 0-07L N 44-16 W 246.3 on RR down
 9 12-29 R S 33-2 152.2 in cut on RR
 10 9-50 R S 21-2 98.2 to B. Hole 518
 11 18-08 R S 13-32 E 157.3 in cut on RR
 12 17-12 R S 1-00 E 134.9 in cut on RR
 13 8-03 L S 5-2 29. to B Hole 516
 14 15-24 R S 19-04 W 30-48 R
 15 98.2

Survey through Rock Cut
 26 PL TANGENT

40 P.F.L	100	dist
-6	-5	center

65	100	dist
-6	-5	center
55	100	dist
-4	-2	center

fault
 19L 33 R
 12.8 L 7.6 R
 Ref. to V em

50	dist
-2	center

16
17
18
19
20

S 31-34 W
 12-30 R S 30-W 117.9 25.00
 334-59 W
 3-25 R S 32-W 92' 6.50 R
 S 87-59 W to st on mag
 53-00 R S 87-W 316.6 9409 R
 N 82-03 E dem street
 47-04 R N 83-E 259.6 up wagon
 S 49-56 E 96-01 R
 48-01 R S 49-E 70 to B Hole

Set up at sta 9 and B to sta 6
 N 44-16 W
 4-38 L N 48-W 262.4 9-16 L
 6-05 L N 54-59 W 349.8 349.8 12-10 L
 N 55-W
 5-06 R N 49-53 W 255.4 10-12 R
 N 50-W
 N 34-05 W 283.2 31-37 R
 15-48 R N 35-W
 13-42 R N 24-W 176.9 26-25 R

Set up at 19 and B to sta 17 for to
 N 38-51 W
 43-12 L N 37-E 182.2 8-62 L
 S 46-33 E
 85-24 L S 45-E 229.5 17-04 L
 S 28-12 W
 64-45 R S 20-W 118.5 to R Hole

Aug 23 1904

Set up at sta P. B to sta 0 to
 N 49-01 W
 89-43 L N 49-00 W 803 to front
 814' to stake on side of D.L + W R R
 837 Proposed B Hole
 1032 to Telegraph Pole in bunker fill
 1452 to stake in lot near back of House
 N 19-26 E
 68-27 R N 20-E 242.9 to pt on
 79-45 E
 39-52 L S 20-E to sta 24 above
 N 9-59 W
 29-25 L N 10-W 214 to pt of

30
31
32

17
15
32

50 dist
-3L centre
 we have nail in tie at end of long Tangent - not measured
 crossing to stake
 10 100 200 300 dist
5-12 10-18 16-17 18-4 17-3
 18 100 200 dist
7-14 10-18 1/2 fine 11-19 - 20 fine

on RR # 6 Junct - to Survey Towards Do Depot
 100 200 dist
5/8 R 4.01 centre
 81 TANGENT, 265 for end of bridge
 100 200 dist
-6 -5 1/2 L centre
 100 200 217 P.L.L. dist
-8 L -9 -6 1/2 - centre + P.F. R
 28 P.L.L. 9.01 P.F. + P.L. dist
58-4 9-4 4.01 centre
 locate Bore Hole # 519 Bunker Hill
 20 150 162
about center of street 166 fine 24-16 25-14 fine line + 18 to fine
 27 100 200 dist
18-19 15-23 10-28 10-29
 Stone near corner # 519

Run line 200 from P.C.C. line and close
 519' to stake on top of Hill
 Survey
 1325 to N edge of River
 1370 to far edge
 ERIE RR near Car Shop sta 25 above
 S atch on RR
 100 dist + P.L.
-4.9 L centre centre

51

33-02 R S89-46² 466.2

52

20.38 R S69-08² 367-2 307.6

HI.17R to nail in center of Bridge

levels for base 7 holes Bork. 235 pages 38-39

Set up at Pt. 519' stake on top of
 N49.01 W see papers
 37.29 L N86-30 W 55.9
 5-10 R N81-20 W 1213 to East Corner
 10-13 R N76-17 W 130' to North East Corner



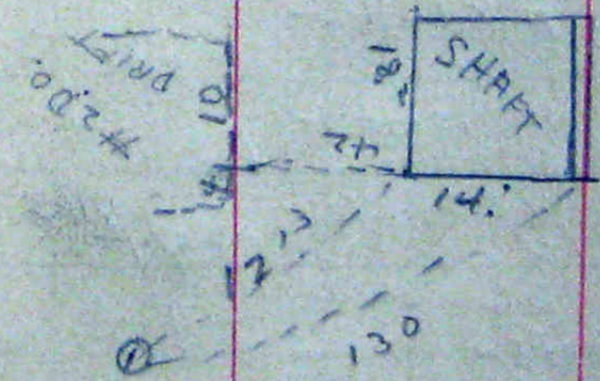
6603A
 Ref-
 Course 48

OW Course 48
 250
 2-15.27.8 L -4 1730 L
 550
 11.5R-5.18 1-19.11 8-26R-4.6L
 50 76 PFLR 100
 12-26R-1L 310 15.5R 8.5L
 245 PFL 250 300
 10.10R-6.18.7L 21R-5.17.7L
 350 400 450 500
 17-30-4 17.29.5 -1.14' 27L 4.9R-11.23
 dist
 3.15.0 + 32.0V
 138 PFLR 150 162 PFL 200
 379.9R 2.413 7.0 36.5 2.177
 350 400
 -1+14L 57R-7.5L 4.417.9R

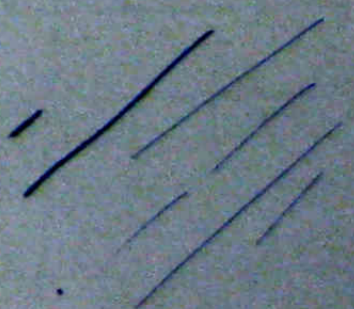
39R 44E.B 50 99FEB 200 300
 11.2R 2.4L 7.7R 6L 6.7R-6.7L 12.2R-1L

little England Hill on course 29 for to locate Shaft at

to East Corner
 East Corner



32' from bank to water in shaft



Set up at sta 36 and Bd to stake

53	N 58.06 W	49.02 L	S 72-52 W	176.5	to pt on
54		44.55 L	S 27-57 W	102.5	to B Hole

see Book 235 for levels

Set up at sta 48 and Bd to sta 47

55	N 30-11 E	79.24 L	S 49-13 E	733.6	to pt
56		89.15 L	N 41-32 E	184.2	to pt
57		74.37 R	S 25-24 W	207.6	to pt
58		77.32 R	S 77-04 E	174.	to pt
59		83.16 R	N 71-20 W	181.	to pt
60		23.35 L	S 85-05 W	324.1	to pt
		12.32 R	N 82-23 W	320.9	to pt

Set up at sta 57 and Bd to sta

61	S 77-04 E	15.06 R	S 61.58 E	231.5	to pt
62		57.02 L	N 66-00 E	75.0	to pt
63		21.54 R	N 87.54 E		to about old pt
64		15.24 R	N 81-24 E	160.5	to pt on
65		22.49 L	N 58-35 E	199.9	to pt on
66		5.35 L	N 53-00 E	178	to pt on
67		31.52 L	N 26-43 E	133.1	to pt on
68		0.46 R	N 30-00 E	101.3	to old
69		30.20 L	N 27-29 E	180.3	to pt on
70		29.09 R	N 2-51 W	103.4	to pt on
71		28.25 R	N 3-30 W	127.1	to pt on
		16.22 R	S 55-52 W	118.9	to pt on

on line course 29 see Page 29 stone

#526

On D & W Track at Ash St. To traverse outcrop

Cut on Rock centre of ash st.

2nd No V cut

on Rock

on Rock

Common Ball RR

near Coal Horse

D. L. & W. RR sta 47

56 to continue traverse on 3rd No V on crop Rock

to Sta 18 see page 28

Sta 17 on Crossing

stone

to pt on Rock

Coal in Cut

on large Boulder

Sta 8

Rock

Rock

to pt on Rock

0	dist
-25 L	-15 L
75	150
55 R	55 R
90	230
12-R to Rock	12-R to Rock
	20. R.

45	85	125	175	dist
-25 L	-36 L	+18 L	-15 L	-10 L

100	135
-45 L to Rock	-60 L
dist	
15 R to Rock	0
50	100
10-R	2-R
50	100
0 R	5 R
	18 R

72
73
74
75
76
77
78
79
80
81
82

26-30R N52-S1W
 N54-W 114.6
 4-02R N48-49W
 N49-W 267.
 89-42L S41-29W
 S42-W
 17-17R N31-32W
 N32-W 122.7
 22-11R N9-21W
 N5-W 188
 24-10L N33-34W
 N39-W 103.9
 47-40R N14-10E
 N15-E 68.4
 17-31R N31-41E
 N30-E 100.8
 72-27R S75-52E
 S80-E 64.3
 34-09R N65-50E
 N42-E 152.3
 19-31R N85-21E
 N85-E 159.
 45-42R S48-57E
 S49-E

53-00R
 8-03R
 to pt
 to sta
 34-33R
 44-21R
 48-2L
 95-21R
 35-11R
 to stake
 to point
 68-17R
 to pt on
 39-02R
 to sta
 91-24R
 to sta

x

A Page 31
 55 Page 31
 to pt on Rock
 to pt on Rock
 " " "
 to pt on stone wall near
 near N#2 SHAFT
 at Mouth of Tunnel 2nd
 Rock
 on ETW VRR
 ON EX. WYRR

45
 25R to Rock
 60
 10R
 dist
 30R
 100
 20L-32L
 145
 200
 240
 53L
 40L
 dist
 0.0

75
 -14L
 47 FT. Rock
 0L
 60
 18R Rock
 20
 15R
 100
 -19L
 70
 12R
 18-R
 dist
 0-
 100
 131NE138E
 145
 1R
 -2L

45
 25R
 4- HOUSE
 4-
 45
 25-R
 35R
 48 FT HOUSE
 4-
 70
 25-R
 35-R
 dist
 25-R
 35-R

75
 35R
 35
 25-R
 50
 30-
 100
 33-R
 135
 42-R
 8R
 dist
 27R
 50R

33

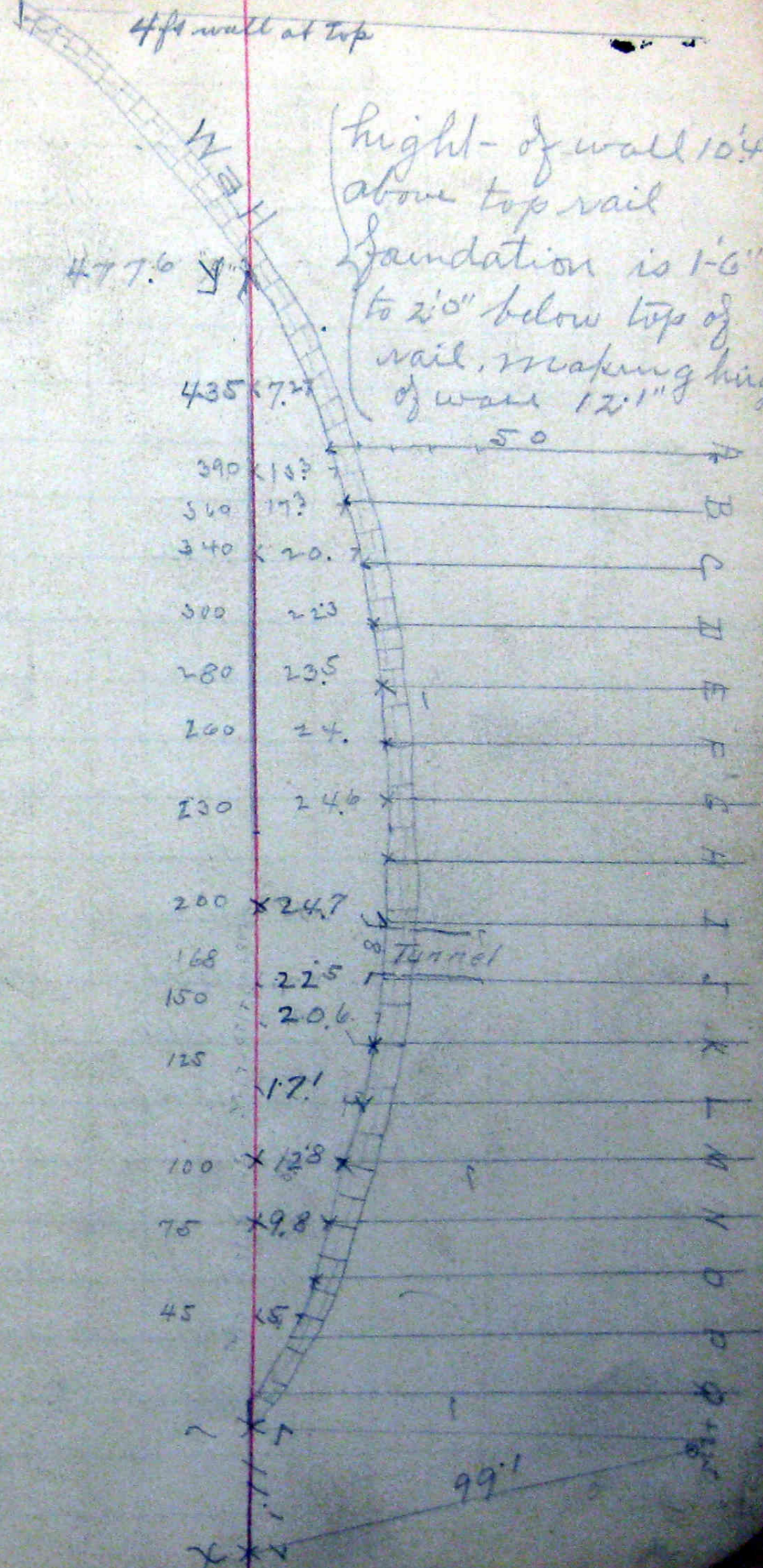
Location of water and profile
 at Bunker Hill Sept. 28-05
 Sketch X B to Y see sketch

80-21R	S 20-00W	49!	160-43R
85-42L	S 69-00E	4 22.5	171.25
88-11R	N 20-00W	50.	176-22R

lines

to line N
 to Abta 9+22.5
 to State H 50
 to H 50

Bunker Hill Breaker



34

7.33	1159.48		1152.15
0.00	1146.20	13.28	1146.20
0.95	1133.90	13.25	1132.95
1.66	1122.44	13.12	1120.78
0.99	1110.36	13.07	1109.37
0.88	1097.94	13.30	1097.06
0.19	1084.59	13.24	1084.70
		10.33	1074.56
		10.56	1074.33
		10.69	1074.20
		10.86	1074.03
		10.98	1073.91
		11.15	1073.74
		11.28	1073.61
		11.42	1073.47
		11.58	1073.31
		11.79	1073.10
		11.97	1072.92
8.28	1080.95	12.22	1072.67
		12.00	1068.95
		11.80	1069.15
		12.22	1068.73
		12-13	1068.82
		11.53	1069.42
		11.43	1069.52

R+20
 R+20
 P+20
 +20
 +20
 +20

Stood for a Cut Stone near mouth of Linnell
 25 ft Station along wall
 Stakes driven in every 20 ft up the hill
 On top of Stone near No 2 drift

On Stone wall at Profile Sta A	Put on Roll #31
" " " " " Sta B	
" " " " " Sta C	
" " " " " Sta D	
" " " " " Sta E	
" " " " " Sta F	
" " " " " Sta G	
" " " " " Sta H	
" " " " " I	
" " " " " J	
" " " " " K	
" " " " " L	The wall is not finished from here

On the wall call R

35

L+20
 K+20
 J+20
 I+20
 H+20
 G+20
 F+20
 E+20
 D+20
 C+20
 B+20
 A+20
 A+30
 B+30
 C+30
 D+30
 E+30
 F+30
 G+30
 H+30
 I+30
 J+30
 K+30
 L+30
 M+30

1080.95	10.30	1070.65
	9.65	1071.30
	8.37	1072.58
	7.00	1073.95
	6.37	1074.58
	5.93	1075.02
	6.15	1074.80
	6.05	1074.90
	5.95	1075.00
	6.05	1074.90
	6.35	1074.60
	4.20	1076.75
	0.00	1080.95
	2.25	1078.70
	1.65	1079.30
	1.90	1079.05
	2.30	1078.65
	1.95	1079.00
	2.45	1078.50
	3.05	1077.90
	4.13	1076.82
	6.20	1074.75
	8.97	1071.98
	10.05	1070.90
	9.50	1071.40
	9.05	1071.90

Put over Roll #31

36

O+30		1080.95	9.63	1071.32
P+30			9.53	1071.42
Q+30			10.00	1070.95
R+30			10.05	1070.90
R+40			9.53	1071.42
Q+40			8.20	1072.75
P+40			8.90	1072.05
O+40			8.63	1072.32
N+40			8.93	1072.02
M+40			8.20	1072.65
L+40			7.95	1073.00
K+40			6.75	1074.20
J+40			3.50	1077.45
I+40			1.67	1079.28
	8.04	1087.71	1.28	1079.67
H+40			7.30	1080.41
G+40			6.30	1081.41
F+40			5.60	1082.11
E+40			5.40	1082.31
D+40			5.37	1082.34
C+40			4.53	1083.78
B+40			4.60	1083.11
A+40			4.35	1083.36
	4.06	1088.71	3.06	1084.65
			0.95	1087.76
A+50			2.00	1086.71

Put on Roll #31

37

O+50
D+50
E+50
F+50
G+50
H+50
I+50
J+50
K+50
L+50
M+50
N+50
O+50
P+50
Q+50
R+50
R+60
S+60
T+60
O+60
N+60
M+60
L+60
K+60
J+60

1088.71	2.05	1086.66
	3.07	1085.64
	3.70	1085.01
	3.55	1085.16
	3.90	1084.81
	4.90	1083.80
	6.53	1082.18
	8.60	1080.11
	12.10	1076.61
	13.60	1075.11
	14.80	1073.91
	14.90	1073.81
	15.70	1073.71
	15.68	1073.13
	15.76	1072.95
	16.62	1072.09
	15.27	1072.44
	14.72	1073.99
	14.70	1074.01
	14.22	1074.49
	13.51	1075.20
	12.43	1076.28
	10.67	1078.04
	8.90	1079.81
	5.85	1082.86
	2.90	1085.84

Peck on Roll #31